



TRAFFIC REPORT 2013

**TRAFFIC BRANCH HEADQUARTERS
HONG KONG POLICE FORCE**

豐富資訊內容
時刻與您互通



App Store



Google play



YouTube



Police Public Page
警務公眾網頁

More Information
Instant Connection

List of Contents

	<u>Pages</u>
Introduction and Overall Situation	1-3
Explanatory Notes	4
<u>Part A - Traffic Accidents and Casualties Report</u>	
Table 1 - Traffic Accidents by Police Regions	5
Table 2 - Traffic Accident Trends from 2009 – 2013	5
Table 3 - Monthly Figures for Traffic Accidents	6
Table 4 - Monthly Traffic Accident Trends for the past 13 months	6
Table 5 - Traffic Accidents by Police Divisions - HKI	7
Table 6 - Traffic Accidents by Police Divisions – KE	7
Table 7 - Traffic Accidents by Police Divisions – KW	8
Table 8 - Traffic Accidents by Police Divisions - NTS	8
Table 9 - Traffic Accidents by Police Divisions - NTN	9
Table 10 - Number of Vehicles involved in Traffic Accidents in 2012	10
Table 11 - Number of Vehicles involved in Traffic Accidents in 2013	11
Table 12 - Average Traffic Accidents by Hour of the Day	12
Table 13 - Average Traffic Accidents by Day of the Week	13
Table 14 - Major Driver Contributory Factors of Traffic Accidents	14
Table 15 - Comparison of Major Driver Contributory Factors of Traffic Accidents	14
Table 16 - Bicycle Accidents by Police Regions in 2013	15
Table 17 - Comparison of Bicycle Accidents by Police Districts	15
Table 18 - Traffic Accidents on Expressways	16

	<u>Pages</u>
Table 19 - Major Driver Contributory Factors of Expressway Accidents	17
Table 20 - Comparison of Major Driver Contributory Factors of Expressway Accidents	17
Table 21 - Traffic Casualties by Police Regions	18
Table 22 - Traffic Casualties Trends from 2009 – 2013	18
Table 23 - Monthly Figures for Traffic Casualties	19
Table 24 - Monthly Traffic Casualties Trends for the past 13 months	19
Table 25 - Traffic Casualties by Class of Road User	20
Table 26 - Comparison of Traffic Casualties by Class of Road User	20
Table 27 - Traffic Casualties by Age Group	21
Table 28 - Comparison of Traffic Casualties by Age Group	21

Part B - Traffic Enforcement Report

Table 29 - Comparison of Traffic Enforcement	23
Table 30 - Comparison of Selective Traffic Enforcement Policy (STEP) Statistics	24
Table 31 - Enforcement Statistics by Police Regions in 2013	25
Table 32 - Complaints against Taxi Related Offences in 2013	26
Table 33 - Prosecutions against Taxi Related Offences in 2013	27
Table 34 - Prosecutions Arising from Traffic Accidents	28
Table 35 - Enforcement Statistics by Police Formations in 2013 - HKI	29
Table 36 - Enforcement Statistics by Police Formations in 2013 - KE	30
Table 37 - Enforcement Statistics by Police Formations in 2013 - KW	31
Table 38 - Enforcement Statistics by Police Formations in 2013 - NTS	32
Table 39 - Enforcement Statistics by Police Formations in 2013 - NTN	33

Traffic Report 2013

Introduction

This report is comprised of two parts. The first part provides a review on the traffic accidents and casualties in 2013, and the second part details police enforcement action taken in the same period.

2. The objectives of this report are threefold. Firstly, it provides a statistical illustration of traffic accident and casualty figures and the overall enforcement action during the period under review. Secondly, it enables Regional and District Police management teams to evaluate the effectiveness of their own enforcement action in promoting road safety. Lastly, it avails data for research and analysis of traffic accidents by interested bodies.

Overall Situation

Traffic Accidents

3. When compared with 2012, the total number of traffic accidents involving casualties increased by 195 cases (+1%), from 15 894 cases to 16 089 cases. Fatal accidents registered an increase of 12 cases (+10%), from 116 cases to 128 cases. [Table 1]

4. Road junctions and pedestrian crossings continued to be locations where traffic accidents were most likely to occur. Of the 16 089 accidents, 3 661 cases (23%) occurred at or in the vicinity of road junctions, while 8 122 cases (50%) occurred at or near pedestrian crossings. Drivers' fault accounted for 76% (12 282 cases) of all traffic accidents.

5. In respect of the type of vehicles involved in traffic accidents, 'private car' formed the largest group at 7 093 (29%), followed by 'taxi' at 4 395 (18%), 'goods vehicle' at 3 795 (15%), 'bicycle' at 2 719 (11%), 'franchised public bus' at 2 322 (9%) and 'motorcycle' at 2 222 (9%). However, working on the accident rate per 1 000 licensed vehicles, the most accident prone vehicle type was 'franchised public bus' at 406, followed by 'public light bus' at 259, 'taxi' at 243, 'other public bus' at 75, 'private bus' at 57 and 'motorcycle' at 55. The accident rate for private car was only 15, the lowest among all vehicle classes. [Table 11]

Traffic Casualties

6. When compared with 2012, the total number of traffic casualties increased by 386 persons (+2%), from 20 210 persons to 20 596 persons. Of the 20 596 casualties, 130 persons were killed, representing an increase of 10 persons (+8%). [Table 21]

7. Regarding the categories of casualties, drivers (including motor-cyclists and cyclists) formed the largest group. There were 9 658 drivers (47%) injured, followed by 7 244 passengers (35%) and 3 694 pedestrians (18%). Pedestrian casualties recorded a higher rate of fatalities and serious injuries than those of other categories of casualties. Elderly pedestrians aged 60 or above remained the most vulnerable group in fatal traffic accidents. There were 6 cyclists killed in 2013, representing a decrease of 33% when compared with 9 cyclists killed in 2012. [Table 25 & Table 27]

Traffic Enforcement

8. Police enforcement action in 2013 continued to focus on reducing traffic accidents and improving traffic flow. When compared with 2012, the overall enforcement figures increased by 7% to 1 573 247. [Table 29]

9. On Drink Driving enforcement, a total of 196 806 drivers were breathalysed, an increase of 19% when compared with 2012. 953 drivers were found to have exceeded the prescribed limits whilst 367 drivers were below the limit, but had consumed some alcohol. The 'hit-rate' for drivers over the legal limit dropped encouragingly from 0.58% in 2012 to 0.48% in 2013. [Table 30]

10. In 2013, 429 drivers were convicted of various Drink Driving offences. Fines imposed ranged from \$1,000 to \$15,000 with disqualification periods varying from 2 to 60 months. 5 drivers were sentenced to imprisonment, ranging from 2 days to 3 months.

11. Operation Outranger targeting seatbelt offences has been coordinated by Traffic Branch Headquarters (TBHQ) since November 2005. Each operation lasts for 24 hours and focuses on education, publicity and enforcement. Four operations were performed in January, March, August and October 2013 with a total of 5 PLB drivers and 664 PLB passengers summonsed.

12. In 2013, Police received 4 261 taxi related complaints from members of the public and 1 662 referrals from the Transport Complaints Unit, making a total of 5 923 reports that required Police investigation, an increase of 6% when compared with 5 609 cases in 2012. A total of 3 670 prosecutions were instituted against taxi related offences, an increase of 7% when compared with 3 425 cases in 2012. [Table 32 & Table 33]

13. To address concerns over cycling safety, Operation Goldensun targeting cycling offences has been coordinated by TBHQ since 2003. Five operations were conducted in March, May, July, September and November 2013 with a total of 4 316 summonses and 775 verbal warnings issued to cyclists.

14. In 2013, a total of 2 316 persons were disqualified from driving. An increase of 15% was noted when compared with 2012. The risk of disqualification through accumulating 15 or more demerit points within 24 months remains an effective tool in maintaining driving standards.

15. New drug driving legislation was implemented on 15 March 2012. In 2013, 117 Drug Influence Recognition Observations (DIRO) and 20 Impairment Tests (IT) were conducted and 37 drivers were arrested for the new drug driving offences with 31 blood / urine specimens received. Amongst those 37 arrested drivers, 30 have been charged with the new drug driving offences.

16. In 2013, there were a total of 37 cases of drug driving, representing a decrease of 33% when compared with 55 cases in 2012. [Table 30]

Traffic Branch Headquarters
Hong Kong Police Force
May 2014

Explanatory Notes

Accidents

Each accident figure represents one incident although it may involve more than one vehicle and more than one casualty.

Accident Analysis

The primary or contributory cause of any traffic accident referred to in this report represents the assessment by the police officer investigating the traffic accident.

Accident Blacksite

If nine or more injury accidents, or six or more pedestrian injury accidents occur at a location in the previous 12 month period, the location will be classified as a *Traffic Accident Blacksite**. Since 2010 Q1, locations where 2 or more fatal traffic accidents occurred in the previous 5 years, will also be classified as a *Traffic Accident Blacksite**.

Fatal Accident

A traffic accident in which one or more persons dies within 30 days of the accident.

Serious Accident

A traffic accident in which one or more persons injured and detained in hospital for more than twelve hours.

Slight Accident

A traffic accident in which all persons involved are either not detained in hospitals or detained for not more than twelve hours.

Fatal Casualty

A person dies within 30 days of the accident.

Serious Casualty

A person injured who is treated in hospital as an 'in-patient' for more than 12 hours. Injuries causing death 30 or more days after the accident are also included in this category.

Slight Casualty

A person with injury of a minor nature such as a sprain, bruise or cut not judged to be severe, or slight shock requiring roadside attention and treatment in hospital is less than 12 hours, or not required.

* Criteria set by the Transport Department

Part A

Traffic Accidents and Casualties for 2013

Table 1 - Traffic Accidents by Police Regions

Region \ Severity	2012				2013				±% change
	Fatal	Serious	Slight	Total	Fatal	Serious	Slight	Total	
Hong Kong Island	21	409	2 575	3 005	19	423	2 615	3 057	+2%
Kowloon East	31	356	1 834	2 221	18	397	1 845	2 260	+2%
Kowloon West	18	321	2 935	3 274	31	277	3 052	3 360	+3%
New Territories South	24	533	2 861	3 418	31	516	2 880	3 427	+0.3%
New Territories North	22	766	3 188	3 976	29	863	3 093	3 985	+0.2%
Total	116	2 385	13 393	15 894	128 (+10%)	2 476 (+4%)	13 485 (+0.7%)	16 089 (+1%)	+1%

Figures in brackets denote the % change compared with last year.

Table 2 - Traffic Accidents Trends from 2009 - 2013

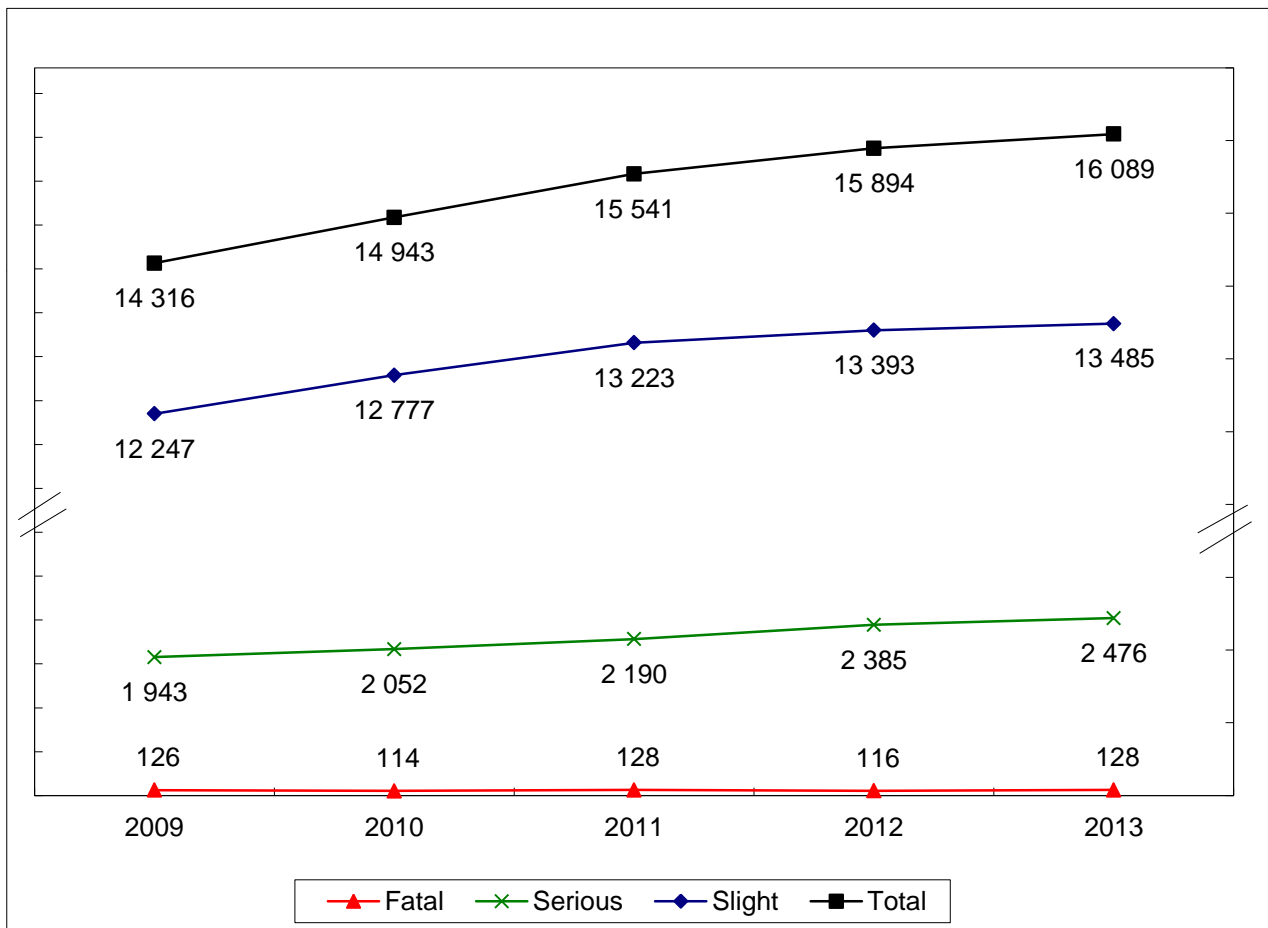


Table 3 - Monthly Figures for Traffic Accidents

Year Month \ Severity	2011				2012				2013				±% change
	Fatal	Serious	Slight	Total	Fatal	Serious	Slight	Total	Fatal	Serious	Slight	Total	
January	8	186	1 044	1 238	13	170	1 086	1 269	7	228	1 108	1 343	+6%
February	12	157	927	1 096	10	200	989	1 199	6	192	953	1 151	-4%
March	13	176	1 077	1 266	9	216	1 115	1 340	9	202	1 085	1 296	-3%
April	6	190	1 059	1 255	8	200	1 132	1 340	8	198	1 041	1 247	-7%
May	9	167	1 110	1 286	2	199	1 145	1 346	10	187	1 142	1 339	-0.5%
June	7	156	1 067	1 230	13	178	1 155	1 346	8	228	1 194	1 430	+6%
July	10	201	1 151	1 362	7	211	1 169	1 387	14	219	1 192	1 425	+3%
August	14	171	1 131	1 316	7	195	1 077	1 279	12	213	1 118	1 343	+5%
September	15	217	1 140	1 372	13	202	1 173	1 388	13	218	1 160	1 391	+0.2%
October	10	222	1 183	1 415	13	233	1 157	1 403	14	212	1 138	1 364	-3%
November	11	187	1 171	1 369	12	187	1 102	1 301	15	191	1 169	1 375	+6%
December	13	160	1 163	1 336	9	194	1 093	1 296	12	188	1 185	1 385	+7%
Total	128	2 190	13 223	15 541	116	2 385	13 393	15 894	128	2 476	13 485	16 089	+1%

Table 4 - Monthly Traffic Accident Trends for the past 13 months

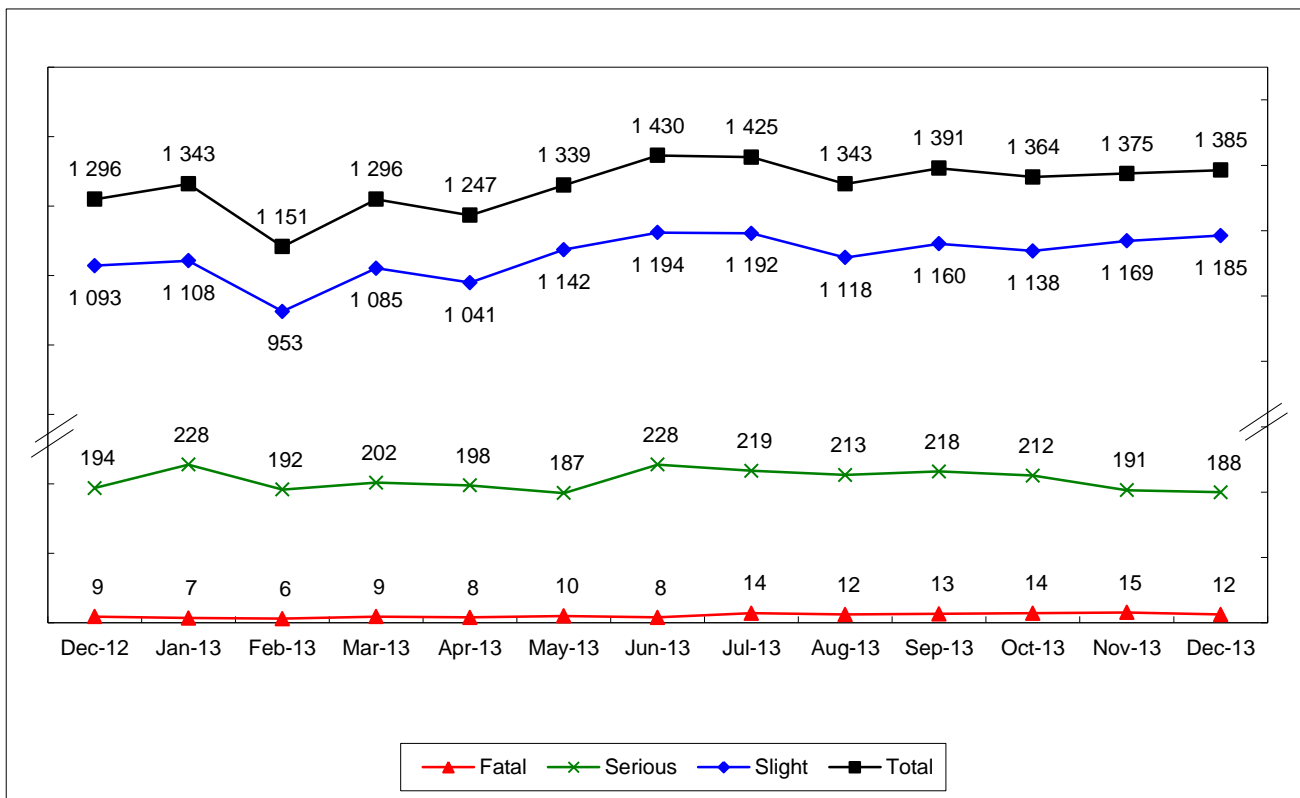


Table 5 - Traffic Accidents by Police Divisions - HKI

Division \ Severity	Year		2012				2013				±% change
	Fatal	Serious	Slight	Total	Fatal	Serious	Slight	Total			
Central	0	36	434	470	2	60	447	509	+8%		
Peak	0	3	21	24	0	1	24	25	+4%		
Western	6	49	245	300	1	40	282	323	+8%		
Aberdeen	1	53	361	415	2	51	302	355	-14%		
Stanley	0	10	59	69	0	9	52	61	-12%		
Happy Valley	3	25	192	220	2	33	197	232	+5%		
Wanchai	3	74	550	627	4	57	546	607	-3%		
North Point	4	59	327	390	3	71	347	421	+8%		
Chai Wan	4	93	377	474	5	93	401	499	+5%		
Cheung Chau *	0	7	9	16	0	8	17	25	+56%		
Total	21	409	2 575	3 005	19	423	2 615	3 057	+2%		

* Traffic accidents on Islands less Lantau District are included in Hong Kong Island Police Region.

Table 6 - Traffic Accidents by Police Divisions - KE

Division \ Severity	Year		2012				2013				±% change
	Fatal	Serious	Slight	Total	Fatal	Serious	Slight	Total			
Wong Tai Sin	12	77	501	590	5	91	490	586	-0.7%		
Sai Kung	3	32	128	163	1	30	108	139	-15%		
Kwun Tong	6	77	418	501	1	85	431	517	+3%		
Tseung Kwan O	2	92	329	423	3	91	347	441	+4%		
Ngau Tau Kok	2	44	255	301	4	51	256	311	+3%		
Sau Mau Ping	6	34	203	243	4	49	213	266	+9%		
Total	31	356	1 834	2 221	18	397	1 845	2 260	+2%		

Table 7 - Traffic Accidents by Police Divisions - KW

Division \ Severity	Year		2012				2013				±% change
	Fatal	Serious	Slight	Total	Fatal	Serious	Slight	Total			
Yau Ma Tei	3	42	459	504	4	45	496	545	+8%		
Tsim Sha Tsui	0	20	256	276	0	17	262	279	+1%		
Mong Kok	4	58	532	594	9	39	539	587	-1%		
Sham Shui Po	2	41	299	342	3	38	310	351	+3%		
Cheung Sha Wan	2	65	472	539	7	54	493	554	+3%		
Kowloon City	5	51	521	577	5	46	537	588	+2%		
Hung Hom	2	44	396	442	3	38	415	456	+3%		
Total	18	321	2 935	3 274	31	277	3 052	3 360	+3%		

Table 8 - Traffic Accidents by Police Divisions - NTS

Division \ Severity	Year		2012				2013				±% change
	Fatal	Serious	Slight	Total	Fatal	Serious	Slight	Total			
Tsuen Wan	2	142	623	767	1	147	655	803	+5%		
Kwai Chung	1	49	293	343	8	59	306	373	+9%		
Tsing Yi	4	73	388	465	12	68	338	418	-10%		
Shatin	4	87	477	568	3	54	462	519	-9%		
Tin Sum	4	46	325	375	0	42	296	338	-10%		
Ma On Shan	3	67	455	525	2	85	461	548	+4%		
Lantau North	5	35	169	209	4	42	194	240	+15%		
Lantau South	0	15	26	41	1	6	45	52	+27%		
Airport	1	19	105	125	0	13	123	136	+9%		
Total	24	533	2 861	3 418	31	516	2 880	3 427	+0.3%		

Table 9 - Traffic Accidents by Police Divisions - NTN

Division	Severity	2012				2013				±% change
		Fatal	Serious	Slight	Total	Fatal	Serious	Slight	Total	
Tuen Mun		1	65	298	364	3	53	289	345	-5%
Castle Peak		5	88	327	420	6	83	311	400	-5%
Tin Shui Wai		1	64	242	307	3	87	238	328	+7%
Yuen Long		3	141	566	710	2	163	540	705	-0.7%
Pat Heung		2	70	187	259	1	88	182	271	+5%
Tai Po		8	203	936	1 147	7	225	903	1 135	-1%
Sheung Shui		1	102	473	576	6	121	481	608	+6%
Lok Ma Chau		1	22	104	127	1	27	120	148	+17%
Ta Kwu Ling		0	6	20	26	0	6	12	18	-31%
Sha Tau Kok		0	5	35	40	0	10	17	27	-33%
Total		22	766	3 188	3 976	29	863	3 093	3 985	+0.2%

Table 10 - Number of Vehicles Involved in Traffic Accidents in 2012

Region	Severity	Motorcycle	Private Car	Private Light Bus	Public Light Bus (N.B. 1)	Goods Vehicle	Private Bus	Franchised Public Bus (N.B. 2)	Other Public Buses (N.B. 3)	Taxi	Tram	Bicycle	Handcart	Other Vehicles (N.B. 4)	Light Rail Transit	Total
Hong Kong Island	Fatal	2	7	0	1	9	0	3	0	4	2	1	2	0	0	31
	Serious	71	123	4	31	69	0	84	12	94	7	30	0	10	0	535
	Slight	425	1 096	18	169	433	5	525	99	942	35	64	3	45	0	3 859
	Total	498	1 226	22	201	511	5	612	111	1 040	44	95	5	55	0	4 425
Kowloon East	Fatal	5	8	0	5	10	0	1	1	9	0	0	0	0	0	39
	Serious	93	112	3	49	73	1	41	8	75	0	36	2	6	0	499
	Slight	374	874	14	189	498	3	253	58	534	0	84	2	21	0	2 904
	Total	472	994	17	243	581	4	295	67	618	0	120	4	27	0	3 442
Kowloon West	Fatal	2	1	0	3	10	0	2	1	0	0	2	0	0	0	21
	Serious	69	109	2	22	67	2	42	7	104	0	14	3	6	0	447
	Slight	416	1 560	20	164	688	4	542	96	1 112	0	70	12	43	0	4 727
	Total	487	1 670	22	189	765	6	586	104	1 216	0	86	15	49	0	5 195
NT South	Fatal	6	4	0	4	9	0	1	2	6	0	3	0	1	0	36
	Serious	95	160	1	34	159	3	60	15	105	0	123	1	24	0	780
	Slight	319	1 114	16	181	713	11	368	89	590	0	793	2	80	0	4 276
	Total	420	1 278	17	219	881	14	429	106	701	0	919	3	105	0	5 092
NT North	Fatal	1	10	0	4	10	0	2	0	2	0	3	0	1	0	33
	Serious	100	202	1	37	179	1	41	16	112	0	341	1	13	7	1 051
	Slight	267	1 479	9	174	826	5	230	94	551	0	1 193	3	49	6	4 886
	Total	368	1 691	10	215	1 015	6	273	110	665	0	1 537	4	63	13	5 970
Total	Fatal	16	30	0	17	48	0	9	4	21	2	9	2	2	0	160
	Serious	428	706	11	173	547	7	268	58	490	7	544	7	59	7	3 312
	Slight	1 801	6 123	77	877	3 158	28	1 918	436	3 729	35	2 204	22	238	6	20 652
	Total	2 245	6 859	88	1 067	3 753	35	2 195	498	4 240	44	2 757	31	299	13	24 124
% share		9%	28%	0.4%	4%	16%	0.1%	9%	2%	18%	0.2%	11%	0.1%	1%	0.05%	100%
Accident rate per 1 000 licensed vehicles		58	15	39	246	33	65	376	71	234	← N.A. →					33

N.B.

1. : Including franchised mini bus
2. : Kowloon Motor Bus, Franchised City Bus, New Lantau Bus, New World First Bus, Long Win Bus and unconfirmed franchised bus.
3. : Other Public Buses' include non-franchised Public Bus and MTR Bus.
4. : Other vehicles' include trailer, village vehicle, unknown vehicle and other vehicles.

Table 11 - Number of Vehicles involved in Traffic Accidents in 2013

Region	Severity	Motorcycle	Private Car	Private Light Bus	Public Light Bus (N.B. 1)	Goods Vehicle	Private Bus	Franchised Public Bus (N.B. 2)	Other Public Buses (N.B. 3)	Taxi	Tram	Bicycle	Handcart	Other Vehicles (N.B. 4)	Light Rail Transit	Total
Hong Kong Island	Fatal	1	2	0	3	9	0	2	2	2	0	1	0	0	0	22
	Serious	76	149	2	34	60	0	78	10	133	8	27	2	3	0	582
	Slight	407	1 127	23	154	437	3	567	92	910	51	97	3	31	0	3 902
	Total	484	1 278	25	191	506	3	647	104	1 045	59	125	5	34	0	4 506
Kowloon East	Fatal	2	3	0	5	5	0	1	1	4	0	1	0	0	0	22
	Serious	89	150	4	50	89	1	53	7	96	0	48	2	4	0	593
	Slight	400	894	16	205	422	3	293	43	515	0	137	1	21	0	2 950
	Total	491	1 047	20	260	516	4	347	51	615	0	186	3	25	0	3 565
Kowloon West	Fatal	3	4	1	4	13	0	4	2	3	0	0	0	1	0	35
	Serious	44	108	1	18	64	0	47	12	72	0	11	1	6	0	384
	Slight	436	1 594	18	215	738	5	540	91	1 158	0	99	10	36	0	4 940
	Total	483	1 706	20	237	815	5	591	105	1 233	0	110	11	43	0	5 359
NT South	Fatal	6	10	0	0	15	0	2	0	8	0	3	0	1	0	45
	Serious	76	165	4	48	129	0	63	20	100	0	116	0	23	0	744
	Slight	311	1 084	13	199	805	11	365	106	643	0	762	0	75	0	4 374
	Total	393	1 259	17	247	949	11	430	126	751	0	881	0	99	0	5 163
NT North	Fatal	1	9	0	3	12	1	2	0	6	0	3	0	1	2	40
	Serious	103	312	4	34	200	1	46	25	146	0	351	0	14	6	1 242
	Slight	267	1 482	10	156	797	7	259	114	599	0	1 063	1	30	13	4 798
	Total	371	1 803	14	193	1 009	9	307	139	751	0	1 417	1	45	21	6 080
Total	Fatal	13	28	1	15	54	1	11	5	23	0	8	0	3	2	164
	Serious	388	884	15	184	542	2	287	74	547	8	553	5	50	6	3 545
	Slight	1 821	6 181	80	929	3 199	29	2 024	446	3 825	51	2 158	15	193	13	20 964
	Total	2 222	7 093	96	1 128	3 795	32	2 322	525	4 395	59	2 719	20	246	21	24 673
% share		9%	29%	0.4%	5%	15%	0.1%	9%	2%	18%	0.2%	11%	0.1%	1%	0.1%	100%
Accident rate per 1 000 licensed vehicles		55	15	37	259	33	57	406	75	243	← N.A. →					33

N.B.

1. : Including franchised mini bus
2. : Kowloon Motor Bus, Franchised City Bus, New Lantau Bus, New World First Bus, Long Win Bus and unconfirmed franchised bus.
3. : Other Public Buses' include non-franchised Public Bus and MTR Bus.
4. : Other vehicles' include trailer, village vehicle, unknown vehicle and other vehicles.

Table 12 - Average Traffic Accidents by Hour of the Day

Hour	Region	2012					2013					±% change		
		HKI	KE	KW	NTS	NTN	Total	HKI	KE	KW	NTS		NTN	Total
0001-0100		0.18	0.19	0.22	0.25	0.26	1.10	0.18	0.16	0.22	0.20	0.25	1.02	-7%
0101-0200		0.08	0.08	0.20	0.17	0.14	0.66	0.12	0.08	0.14	0.16	0.16	0.67	+2%
0201-0300		0.08	0.06	0.14	0.12	0.13	0.52	0.08	0.08	0.15	0.14	0.12	0.57	+10%
0301-0400		0.07	0.07	0.14	0.10	0.11	0.49	0.08	0.07	0.13	0.10	0.11	0.48	-2%
0401-0500		0.06	0.05	0.08	0.07	0.10	0.36	0.07	0.08	0.11	0.09	0.10	0.45	+25%
0501-0600		0.10	0.06	0.12	0.08	0.11	0.48	0.06	0.07	0.11	0.12	0.10	0.46	-4%
0601-0700		0.10	0.10	0.12	0.22	0.14	0.67	0.16	0.14	0.17	0.14	0.17	0.78	+16%
0701-0800		0.32	0.27	0.35	0.40	0.46	1.80	0.33	0.28	0.35	0.38	0.48	1.82	+1%
0801-0900		0.46	0.43	0.49	0.48	0.43	2.30	0.48	0.41	0.50	0.59	0.57	2.55	+11%
0901-1000		0.45	0.40	0.44	0.46	0.49	2.25	0.45	0.35	0.43	0.45	0.43	2.12	-6%
1001-1100		0.43	0.31	0.39	0.41	0.50	2.04	0.50	0.34	0.44	0.49	0.50	2.27	+11%
1101-1200		0.49	0.31	0.42	0.49	0.57	2.28	0.50	0.32	0.52	0.49	0.58	2.41	+6%
1201-1300		0.51	0.33	0.50	0.54	0.60	2.48	0.56	0.30	0.48	0.55	0.62	2.52	+2%
1301-1400		0.49	0.33	0.46	0.56	0.70	2.55	0.49	0.32	0.52	0.57	0.67	2.58	+1%
1401-1500		0.47	0.34	0.51	0.64	0.73	2.69	0.51	0.36	0.59	0.56	0.72	2.75	+2%
1501-1600		0.54	0.33	0.64	0.69	0.85	3.05	0.56	0.39	0.61	0.62	0.81	2.98	-2%
1601-1700		0.54	0.37	0.58	0.66	0.91	3.05	0.52	0.41	0.60	0.66	0.78	2.97	-3%
1701-1800		0.55	0.42	0.63	0.63	0.88	3.11	0.55	0.39	0.59	0.63	0.87	3.03	-3%
1801-1900		0.57	0.40	0.61	0.63	0.71	2.92	0.49	0.41	0.68	0.65	0.82	3.04	+4%
1901-2000		0.46	0.37	0.54	0.44	0.52	2.34	0.45	0.31	0.47	0.41	0.52	2.18	-7%
2001-2100		0.35	0.22	0.38	0.36	0.37	1.68	0.33	0.25	0.34	0.41	0.38	1.70	+1%
2101-2200		0.34	0.19	0.36	0.33	0.39	1.60	0.35	0.25	0.38	0.36	0.41	1.74	+9%
2201-2300		0.32	0.27	0.33	0.34	0.35	1.60	0.30	0.25	0.36	0.34	0.40	1.65	+3%
2301-2400		0.27	0.18	0.30	0.27	0.40	1.42	0.26	0.18	0.32	0.28	0.33	1.37	-4%

Table 13 - Average Traffic Accidents by Day of the Week

Year		2012					2013					±% change		
Day	Region	HKI	KE	KW	NTS	NTN	Total	HKI	KE	KW	NTS		NTN	Total
	Sun	7.66	5.40	8.32	9.98	13.87	45.23	7.50	6.19	7.69	9.71	13.02	44.12	-2%
	Mon	8.00	6.34	9.15	8.72	9.58	41.79	8.38	7.17	9.73	8.65	10.48	44.42	+6%
	Tue	8.08	6.06	8.27	9.31	10.25	41.96	8.15	6.09	8.72	8.79	10.23	41.98	+0.05%
	Wed	7.88	5.81	8.67	8.87	10.06	41.29	8.13	5.62	9.27	8.67	9.37	41.06	-0.6%
	Thu	8.79	5.69	8.40	9.04	9.52	41.44	8.67	6.06	8.63	9.50	9.62	42.48	+3%
	Fri	8.94	6.56	9.00	8.81	9.75	43.06	9.17	6.25	9.77	9.48	10.67	45.35	+5%
	Sat	8.13	6.63	10.81	10.65	12.98	49.21	8.62	5.96	10.63	10.92	13.06	49.19	-0.04%

Table 14 - Major Driver Contributory Factors of Accidents

Factors	2012	2013	±% change
1. Driving inattentively	3 125 (3 050)	3 471 (3 397)	+11% +11%
2. Losing control of vehicle	1 625 (1 615)	1 699 (1 684)	+5% +4%
3. Driving too close to vehicle in front	1 372 (1 301)	1 391 (1 318)	+1% +1%
4. Careless lane changing	1 087 (1 071)	1 059 (1 044)	-3% -3%
5. Careless cycling	800 (786)	705 (695)	-12% -12%
6. Improper or illegal turn	689 (678)	615 (610)	-11% -10%
7. Reversing negligently	362 (361)	333 (331)	-8% -8%
8. Failing to ensure the safety of passenger	220 (220)	279 (279)	+27% +27%
9. Disobeying traffic signal	210 (201)	187 (181)	-11% -10%
10. Disobeying give way sign (Slow)	123 (122)	184 (184)	+50% +51%

Figures on top are the number of drivers and figures in brackets denote the number of traffic accidents involved.

Table 15 - Comparison of Major Driver Contributory Factors of Accidents

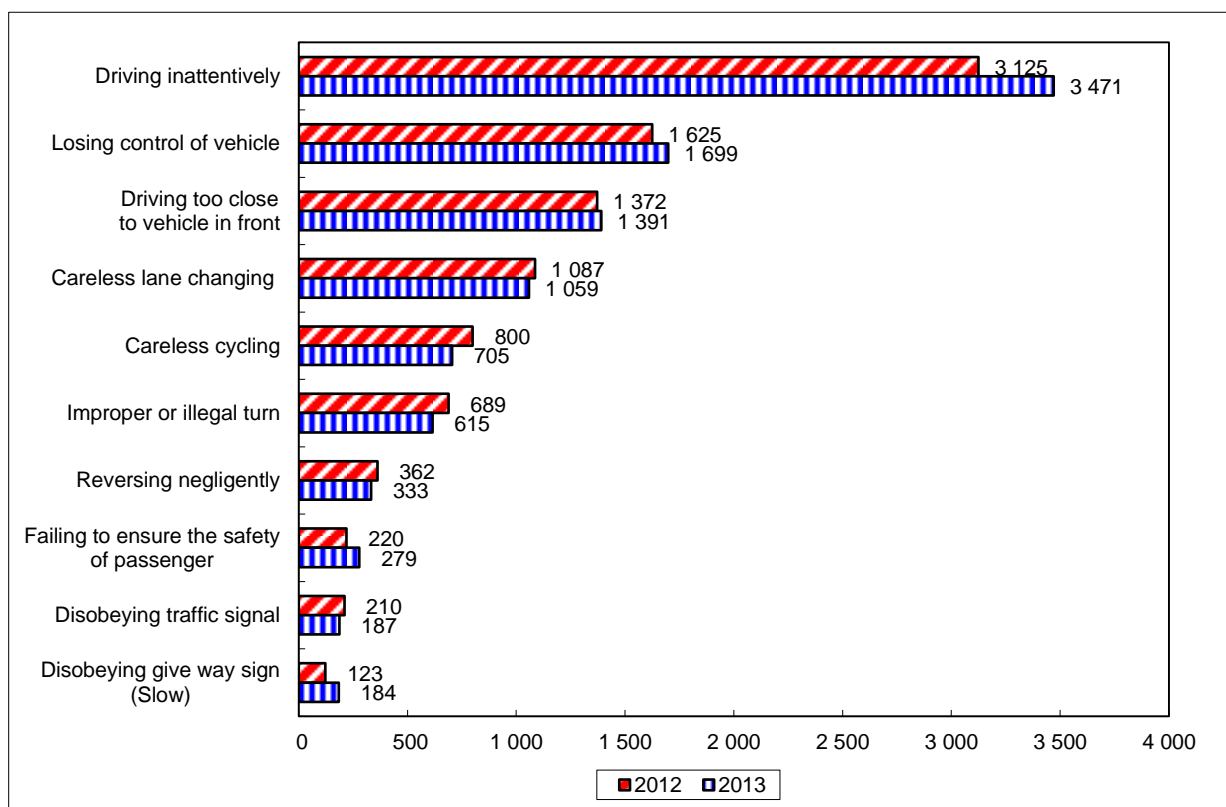


Table 16 - Bicycle Accidents by Police Regions in 2013

Region	Happended Severity	On Cycle track				On Road				Other Place				Grand Total
		Fatal	Serious	Slight	Total	Fatal	Serious	Slight	Total	Fatal	Serious	Slight	Total	
Hong Kong Island		0	0	0	0	1	17	69	87	0	8	24	32	119
Kowloon East		0	20	49	69	1	18	62	81	0	8	17	25	175
Kowloon West		0	0	0	0	0	11	87	98	0	0	9	9	107
New Territories South		0	62	441	503	3	38	214	255	0	7	61	68	826
New Territories North		0	127	480	607	3	161	389	553	0	41	121	162	1 322
Total		0	209	970	1 179	8	245	821	1 074	0	64	232	296	2 549

Table 17 - Comparison of Bicycle Accidents by Police Districts

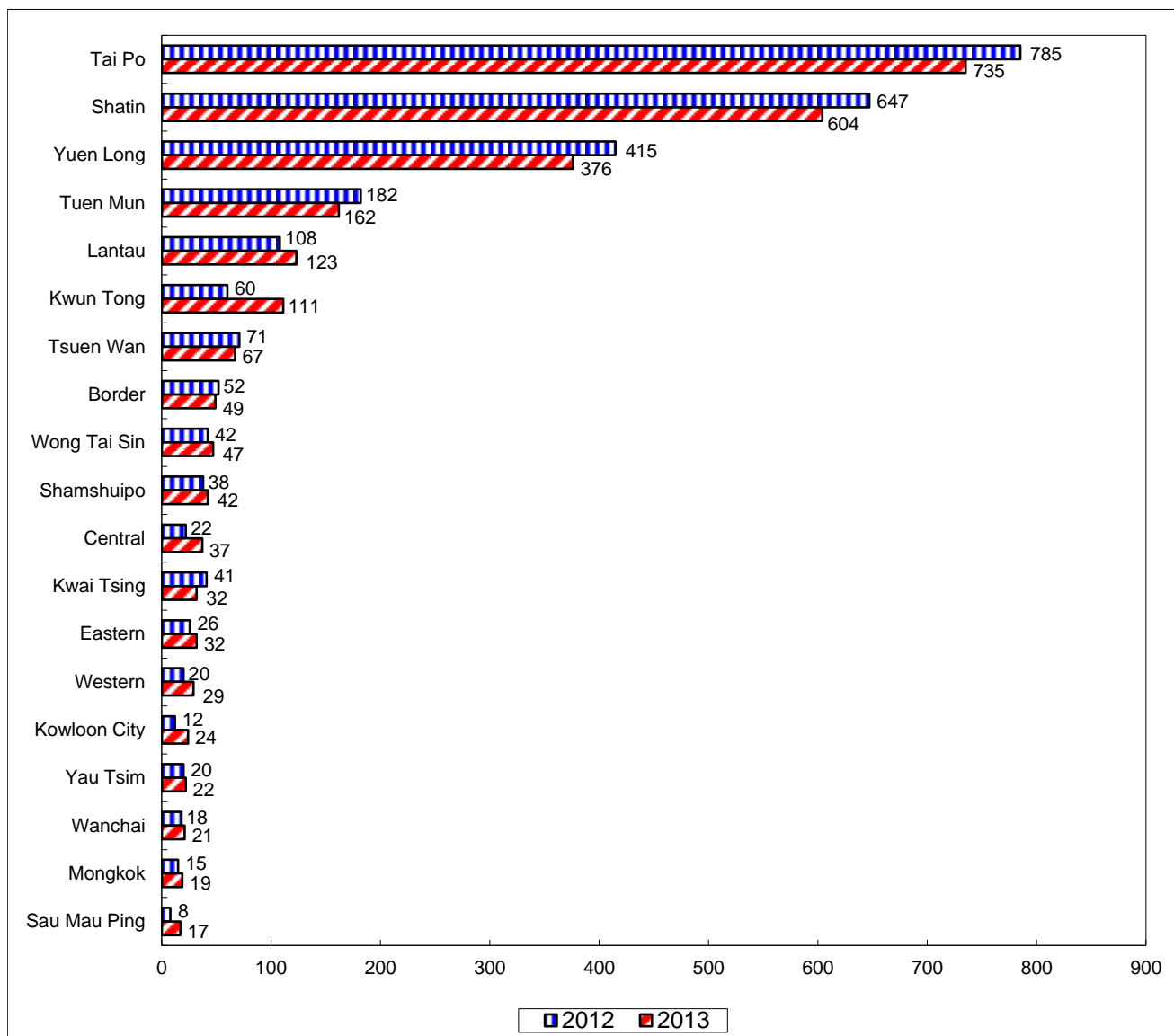


Table 18 - Traffic Accidents on Expressways

Expressway	2012				2013				±% change
	Fatal	Serious	Slight	Total	Fatal	Serious	Slight	Total	
Sha Tin Road	0	4	10	14	0	0	15	15	+7%
Tolo Highway	2	19	115	136	3	32	129	164	+21%
Fanling Highway	2	15	66	83	2	15	70	87	+5%
San Tin Highway	2	3	22	27	2	6	28	36	+33%
Yuen Long Highway	1	7	55	63	2	8	36	46	-27%
Tuen Mun Road	2	44	185	231	3	37	195	235	+2%
Tsuen Wan Road	1	8	52	61	0	8	42	50	-18%
Tai Po Road - Sha Tin *	0	1	12	13	0	1	6	7	-46%
Tate's Cairn Highway	0	7	30	37	0	5	30	35	-5%
Kwun Tong Bypass	1	5	49	55	0	12	43	55	0%
Island Eastern Corridor	0	14	103	117	0	23	99	122	+4%
North Lantau Highway	1	16	56	73	1	16	50	67	-8%
Tsing Kwai Highway	1	4	25	30	4	6	10	20	-33%
West Kowloon Expressway	0	3	18	21	0	1	23	24	+14%
Cheung Tsing Highway	0	4	13	17	0	1	13	14	-18%
Tsing Long Highway	0	8	39	47	0	12	42	54	+15%
Tsing Sha Highway	1	8	20	29	0	4	19	23	-21%
Total	14	170	870	1 054	17	187	850	1 054	0%

* Section between Sha Tin Racecourse and HK Institute of Vocational Ed. (VTC) - Sha Tin.

Table 19 - Major Driver Contributory Factors of Expressway Accidents

Factors	2012	2013	±% change
1. Driving too close to vehicle in front	258 (218)	299 (260)	+16% +19%
2. Driving inattentively	260 (237)	289 (270)	+11% +14%
3. Careless lane changing	159 (156)	126 (125)	-21% -20%
4. Losing control of vehicle	68 (67)	95 (94)	+40% +40%
5. Consumption of alcohol	7 (7)	7 (7)	0% 0%
6. Driving too close to vehicle alongside	10 (10)	5 (5)	-50% -50%
7. Starting negligently	3 (3)	5 (5)	+67% +67%
8. Improper overtaking	3 (3)	5 (5)	+67% +67%
9. Failing to ensure the safety of passenger	2 (2)	5 (5)	+150% +150%
10. Reversing negligently	2 (2)	4 (4)	+100% +100%

Figures on top are the number of drivers and figures in brackets denote the number of traffic accidents involved.

Table 20 - Comparison of Major Driver Contributory Factors of Expressway Accidents

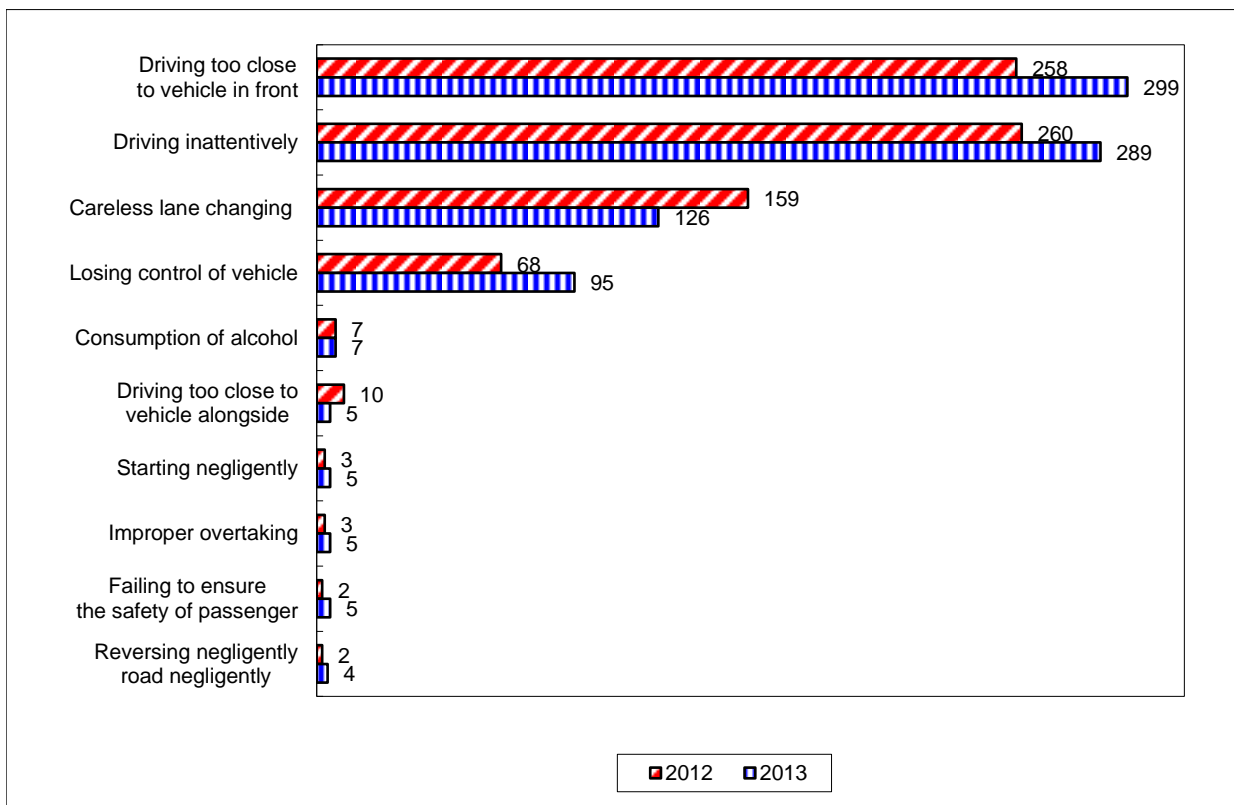


Table 21 - Traffic Casualties by Police Regions

Region \ Severity	2012				2013				±% change
	Fatal	Serious	Slight	Total	Fatal	Serious	Slight	Total	
Hong Kong Island	23	443	3 282	3 748	19	446	3 320	3 785	+1%
Kowloon East	31	381	2 497	2 909	18	425	2 479	2 922	+0.4%
Kowloon West	19	330	3 670	4 019	31	286	3 933	4 250	+6%
New Territories South	24	566	3 862	4 452	32	571	3 866	4 469	+0.4%
New Territories North	23	801	4 258	5 082	30	902	4 238	5 170	+2%
Total	120	2 521	17 569	20 210	130 (+8%)	2 630 (+4%)	17 836 (+2%)	20 596 (+2%)	+2%

Figures in brackets denote the % change compared with last year.

Table 22 - Traffic Casualties Trends from 2009-2013

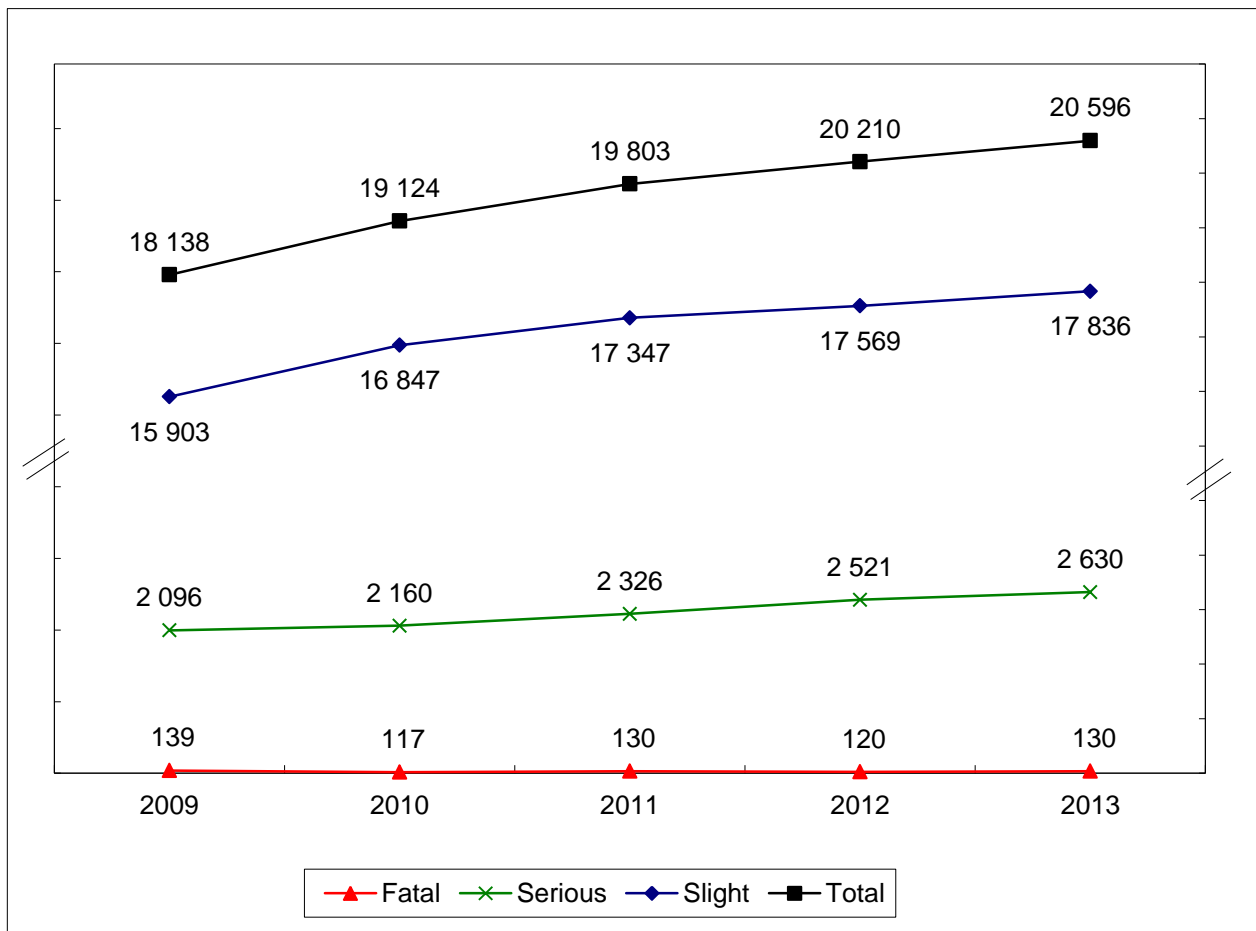


Table 23 - Monthly Figures for Traffic Casualties

Year \ Month	2011				2012				2013				±% change
	Fatal	Serious	Slight	Total	Fatal	Serious	Slight	Total	Fatal	Serious	Slight	Total	
January	8	193	1 341	1 542	13	177	1 449	1 639	7	234	1 435	1 676	+2%
February	12	161	1 214	1 387	10	213	1 282	1 505	7	200	1 243	1 450	-4%
March	13	194	1 387	1 594	9	236	1 529	1 774	9	221	1 461	1 691	-5%
April	6	200	1 392	1 598	9	217	1 547	1 773	8	214	1 345	1 567	-12%
May	9	180	1 438	1 627	2	209	1 469	1 680	10	198	1 567	1 775	+6%
June	7	165	1 473	1 645	13	191	1 557	1 761	8	245	1 595	1 848	+5%
July	10	221	1 494	1 725	7	218	1 569	1 794	14	242	1 587	1 843	+3%
August	14	174	1 458	1 646	7	203	1 335	1 545	12	226	1 514	1 752	+13%
September	15	232	1 554	1 801	13	216	1 502	1 731	13	233	1 504	1 750	+1%
October	10	234	1 591	1 835	13	238	1 457	1 708	15	218	1 449	1 682	-2%
November	11	194	1 520	1 725	14	204	1 446	1 664	15	197	1 568	1 780	+7%
December	15	178	1 485	1 678	10	199	1 427	1 636	12	202	1 568	1 782	+9%
Total	130	2 326	17 347	19 803	120	2 521	17 569	20 210	130	2 630	17 836	20 596	+2%

Table 24 - Monthly Traffic Casualties Trends for the past 13 months

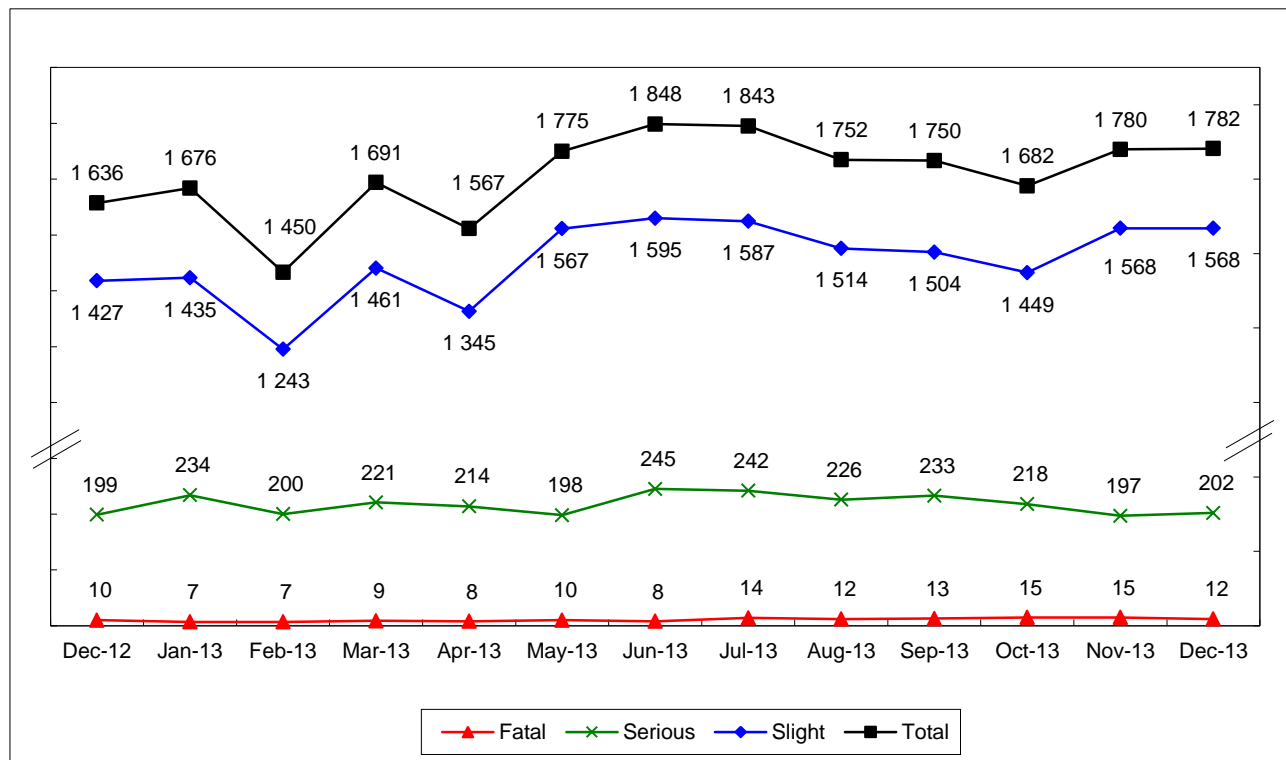


Table 25 - Traffic Casualties by Class of Road User

Year Severity Class	2012						2013						±% change
	Fatal	% share	Serious	Slight	Total	% share	Fatal	% share	Serious	Slight	Total	% share	
Driver	15	13%	423	4 634	5 072	25%	22	17%	481	4 701	5 204	25%	+3%
Motor-cyclist	11	9%	385	1 676	2 072	10%	8	6%	342	1 691	2 041	10%	-1%
Cyclist	9	8%	485	1 948	2 442	12%	6	5%	494	1 913	2 413	12%	-1%
Pedestrian	71	59%	771	2 980	3 822	19%	84	65%	776	2 834	3 694	18%	-3%
Passenger	14	12%	457	6 331	6 802	33%	10	8%	537	6 697	7 244	35%	+6%
Total	120		2 521	17 569	20 210		130		2 630	17 836	20 596		+2%

Table 26 - Comparison of Traffic Casualties by Class of Road User

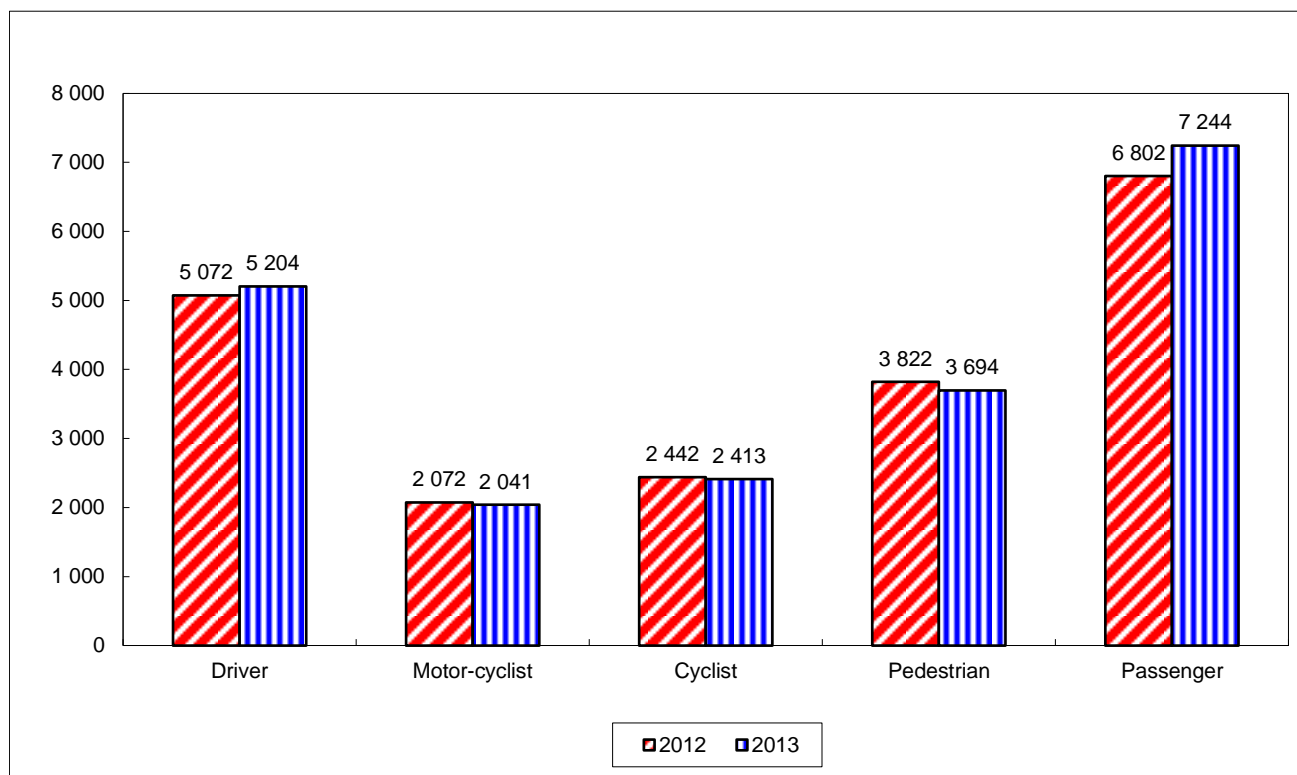
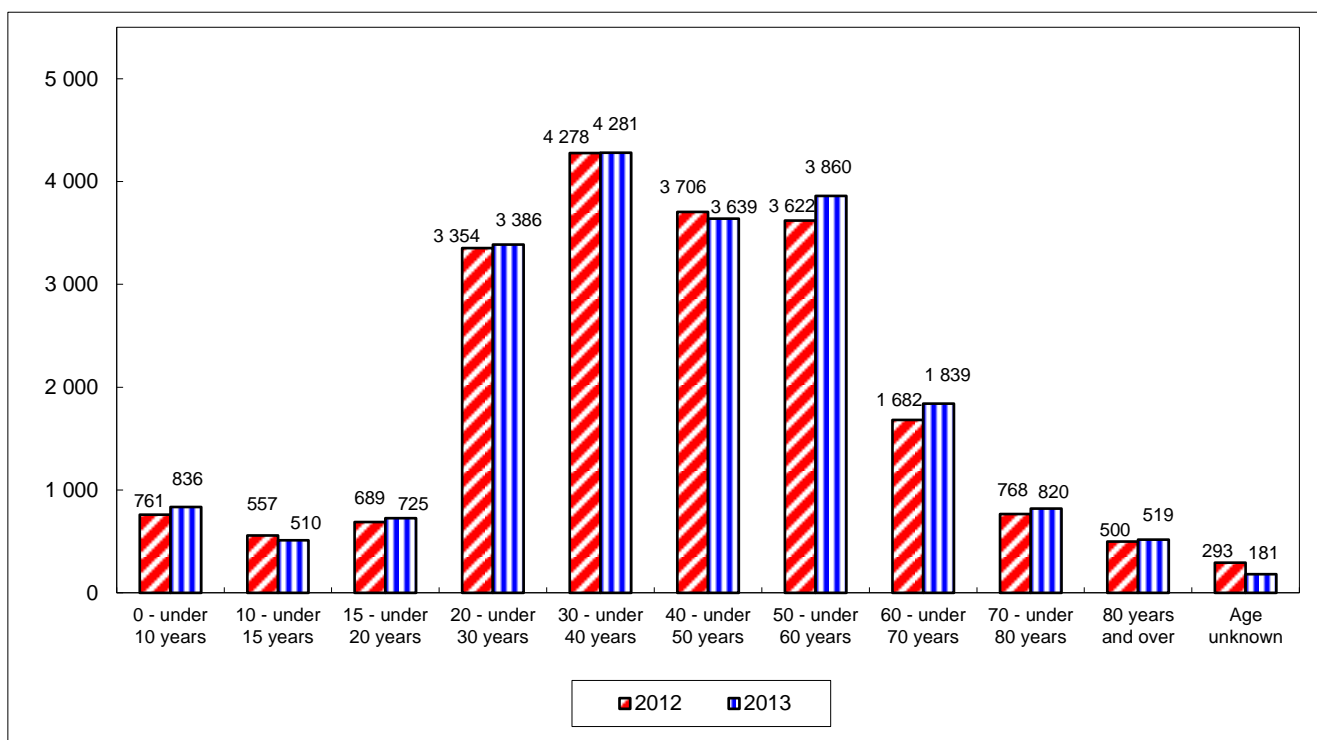


Table 27 - Traffic Casualties by Age Group

Year Age \ Severity	2012						2013						±% change
	Fatal	% share	Serious	Slight	Total	% share	Fatal	% share	Serious	Slight	Total	% share	
0 - under 10 years	1	0.8%	34	726	761	4%	3	2%	57	776	836	4%	+10%
10 - under 15 years	1	0.8%	59	497	557	3%	2	2%	85	423	510	2%	-8%
15 - under 20 years	3	3%	90	596	689	3%	2	2%	94	629	725	4%	+5%
20 - under 30 years	12	10%	382	2 960	3 354	17%	8	6%	371	3 007	3 386	16%	+1%
30 - under 40 years	18	15%	482	3 778	4 278	21%	8	6%	470	3 803	4 281	21%	+0.1%
40 - under 50 years	9	8%	398	3 299	3 706	18%	14	11%	438	3 187	3 639	18%	-2%
50 - under 60 years	21	18%	488	3 113	3 622	18%	25	19%	501	3 334	3 860	19%	+7%
60 - under 70 years	15	13%	253	1 414	1 682	8%	20	15%	292	1 527	1 839	9%	+9%
70 - under 80 years	16	13%	163	589	768	4%	28	22%	177	615	820	4%	+7%
80 years and over	24	20%	152	324	500	2%	20	15%	145	354	519	3%	+4%
Age unknown	0	0%	20	273	293	1%	0	0%	0	181	181	0.9%	-38%
Total	120		2 521	17 569	20 210		130		2 630	17 836	20 596		+2%

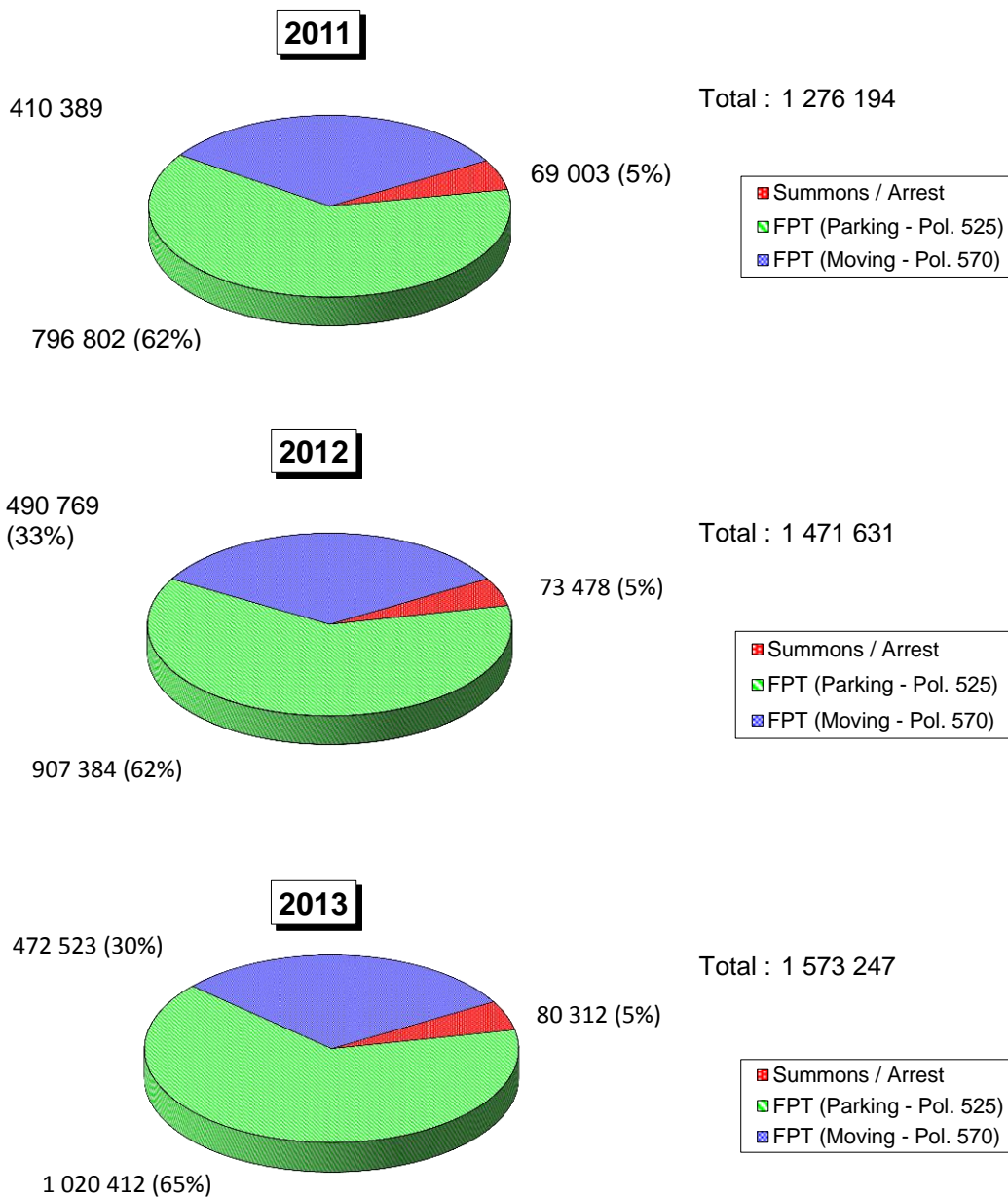
Table 28 - Comparison of Traffic Casualties by Age Group



Part B

Traffic Enforcement Statistics for 2013

Table 29 - Comparison of Traffic Enforcement



Fixed Penalty Tickets (FPT) / Summons / Arrest

Road traffic enforcement statistics for 2013 compared with 2012 are as follows :

	<u>2012</u>	<u>2013</u>	<u>+ % Change</u>	
FPT (Parking - Pol. 525)	907 384	1 020 412	+113 028	(+12%)
FPT (Moving - Pol. 570)	490 769	472 523	-18 246	(-4%)
Summons / Arrest	73 478	80 312	+6 834	(+9%)
Total	1 471 631	1 573 247	+101 616	(+7%)

Table 30- Comparison of Selective Traffic Enforcement Policy (STEP) Statistics

	Offences	2011		2012		2013	
		S/Arr	FPT	S/Arr	FPT	S/Arr	FPT
*	Drink driving	1 026		955		953	
*	Drug driving	51		55		37	
* 1	Dangerous driving (included causing death)	609		379		407	
* 1.1	Dangerous driving causing grievous bodily harm	9		14		19	
* 2	Careless driving	16 286		16 305		16 772	
* 3	Speeding by 15+ km/h to 30 km/h	1 689	95 032	1 742	120 176	2 059	115 695
* 3.1	Speeding by 30+ km/h to 45 km/h	155	5 250	188	7 655	171	6 739
* 3.2	Speeding by more than 45 km/h	378	2	645	0	562	2
3.3	Speeding by 15 km/h or less	823	84 663	1 081	134 762	733	113 984
* 4	Double white line offences	223	16 119	246	17 502	288	18 114
* 5	Traffic signal offences	933	49 942	987	54 828	1 118	60 809
6	U turn causing obstruction	0	38	0	39	0	31
7	Overloading	1 090	6 621	660	4 361	622	3 919
8	Insecure load	25	1 011	20	1 086	31	1 091
9	Traffic sign offences	1 023	37 637	1 077	39 358	1 166	41 423
10	Expressway offside lane restriction	275	7 379	289	6 959	188	5 695
10.1	Overtaking on the nearside	3	1 274	0	1 021	1	732
10.2	Failing to drive on nearside lane	10		2		0	
11	Box junction offence	3	1 013	5	1 147	7	908
11.1	Yellow stripe crossing		1 737		1 464		1 200
12	Seatbelt offences	1 664	12 777	2 188	11 057	2 027	11 009
13	Using handheld mobile phone/telecommunications equipment while vehicle is in motion	43	32 890	37	28 725	40	27 214
* 14	Driving in a motor race or speed trial	19		15		6	
* 15	Failing to give precedence to pedestrian on zebra crossing	9	209	7	187	11	710
16	Construction and maintenance offences	4 720	148	4 904	197	5 285	203
17	Road work signage and lighting offences	361		352		372	
A1	STEP offences by Drivers	31 427	353 742	32 153	430 524	32 875	409 478
	Sub-total	385 169		462 677		442 353	
A2	Other moving offences by Drivers	8 615	56 647	9 221	60 245	10 228	63 045
A3	Total traffic offences by Drivers	450 431		532 143		515 626	
18	Reckless cycling	12		11		7	
19	Careless cycling	218		239		225	
20	Cycling under the influence of drink or drug	0		0		0	
21 **	Negligent riding (including riding bicycle on footpath)	N.A.		N.A.		8 098	
22 **	Riding without lights during hours of darkness or in poor visibility conditions	N.A.		N.A.		1 294	
23 **	Cyclist disobeying traffic signal	N.A.		N.A.		528	
24 **	Cyclist disobeying traffic sign	N.A.		N.A.		2 472	
B1	STEP offences by Cyclists	230		250		12 624	
B2	Other moving offences by Cyclists	8 424		11 622		985	
B3	Total traffic offences by Cyclists	8 654		11 872		13 609	
C1	STEP offences by Drivers and Cyclists	31 657	353 742	32 403	430 524	45 499	409 478
C2	Other moving offences by Drivers and Cyclists	17 039	56 647	20 843	60 245	11 213	63 045
C3	Total traffic offences by Drivers and Cyclists	48 696	410 389	53 246	490 769	56 712	472 523
		459 085		544 015		529 235	
D1	STEP offences by Pedestrians	20 178		20 141		23 525	
D2	Other offences by Pedestrians	129		91		75	
D3	Total Pedestrian offences	20 307		20 232		23 600	
E1	Total STEP offences	405 577		483 068		478 502	
E2	Total other offences	73 815		81 179		74 333	
E3	Grand total	479 392		564 247		552 835	
F1	Total Pol. 525	796 802		907 384		1 020 412	
G1	Verbal warnings - Drivers	203 200		167 237		136 379	
G2	Verbal warnings - Cyclists	12 188		13 382		13 749	
G3	Verbal warnings - Pedestrians	26 844		20 564		23 444	
G4	Total Warnings	242 232		201 183		173 572	

* Driving Offence Points Incurred

** Included as STEP offences since 2013

S/Arr stands for Summons/Arrests

FPT stands for Fixed Penalty Tickets (Moving Offences - Pol. 570)

Table 31 - Enforcement Statistics by Police Regions in 2013

Offences	HKI		KE		KW		NTS		NTN		M		THQ		Total	
	S/Arr	FPT	S/Arr	FPT	S/Arr	FPT	S/Arr	FPT	S/Arr	FPT	S/Arr	FPT	S/Arr	FPT **	S/Arr	FPT
* Drink Driving	96		224		152		248		233						953	
* Drug Driving	3		2		10		5		17						37	
*1 Dangerous driving (included causing death)	125		60		45		93		84						407	
*1.1 Dangerous driving causing grievous bodily harm	3		4		5		7								19	
*2 Careless driving	3 730		2 383		4 108		3 486		3 059				6		16 772	
*3 Speeding by 15+ km/h to 30 km/h	94	7 195	135	16 050	63	8 685	866	49 956	897	33 809			4		2 059	115 695
*3.1 Speeding by 30+ km/h to 45 km/h	10	435	17	794	7	436	63	2 939	74	2 135					171	6 739
*3.2 Speeding by more than 45 km/h	25	1	30		29		173	1	305						562	2
3.3 Speeding by 15 km/h or less	131	15 366	104	24 412	62	21 436	197	32 139	238	20 631			1		733	113 984
*4 Double white line offences	136	4 582	26	3 830	32	3 731	57	2 733	32	3 238			5		288	18 114
*5 Traffic signal offences	143	8 836	118	6 912	470	27 360	107	7 807	275	9 894			5		1 118	60 809
6 U turn causing obstruction		3		4		15		3		6						31
7 Overloading	12	131	7	515	11	407	143	1 624	397	1 242			52		622	3 919
8 Insecure load	6	46	5	354	3	15	3	453	14	223					31	1 091
9 Traffic sign offences	90	18 824	11	3 972	79	9 622	966	5 489	19	3 516			1		1 166	41 423
10 Expressway offside lane restriction	12	306	2	458			125	79	3 191	93	1 615		2		188	5 695
10.1 Overtaking on the nearside		13		15		3		347	1	354					1	732
10.2 Failing to drive on nearside lane																
11 Box junction offence	1	321		27	2	455	2	61	2	44					7	908
11.1 Yellow stripe crossing		334		13		831		18		4						1 200
12 Seat belt offences	915	2 048	249	1 135	251	3 183	248	2 622	364	2 021					2 027	11 009
13 Using handheld mobile phone/telecommunications equipment while vehicle is in motion	11	4 695	1	3 637	8	4 283	12	8 376	7	6 223			1		40	27 214
*14 Driving in a motor race or speed trial									6						6	
*15 Failing to give precedence to pedestrian on zebra crossing	6	68	1	283	1	192		30	3	137					11	710
16 Construction and maintenance offences	1 897	35	312	28	615	8	1 038	52	1 420	80	3				5 285	203
17 Road work signage and lighting offences	79		92		28		115		58						372	
A1 STEP offences by Drivers	7 525	63 239	3 783	62 439	5 981	80 787	7 908	117 841	7 598	85 172	3		77		32 875	409 478
Sub-total	70 764		66 222		86 768		125 749		92 770		3		77		442 353	
A2 Other moving offences by Drivers	1 786	20 847	1 156	6 139	2 718	14 967	2 157	10 717	2 352	10 375	52		7		10 228	63 045
A3 Total traffic offences by Drivers	93 397		73 517		104 453		138 623		105 497		55		84		515 626	
18 Reckless cycling	1				1		3		2						7	
19 Careless cycling	19		26		17		35		127				1		225	
20 Cycling under the influence of drink or drug																
21 Negligent riding (including riding bicycle on footpath)	15		398		183		1 780		5 722						8 098	
22 Riding without lights during hours of darkness or in poor visibility	2		54		139		61		948		90				1 294	
23 Cyclist disobeying traffic signal	51		94		180		32		171						528	
24 Cyclist disobeying traffic sign	60		41		159		750		1 458		4				2 472	
B1 STEP offences by Cyclists	148		613		679		2 661		8 428		94		1		12 624	
B2 Other moving offences by Cyclists	21		48		129		153		551		83				985	
B3 Total Traffic offences by Cyclists	169		661		808		2 814		8 979		177		1		13 609	
C1 STEP offences by Drivers and Cyclists	7 673	63 239	4 396	62 439	6 660	80 787	10 569	117 841	16 026	85 172	97		78		45 499	409 478
C2 Other moving offences by Drivers and Cyclists	1 807	20 847	1 204	6 139	2 847	14 967	2 310	10 717	2 903	10 375	135		7		11 213	63 045
C3 Total traffic offences by Drivers and Cyclists	9 480	84 086	5 600	68 578	9 507	95 754	12 879	128 558	18 929	95 547	232		85		56 712	472 523
Sub-total	93 566		74 178		105 261		141 437		114 476		232		85		529 235	
D1 STEP offences by Pedestrians	1 860		3 255		7 231		4 533		6 646						23 525	
D2 Other offences by Pedestrians			68		1				6						75	
D3 Total Pedestrian offences	1 860		3 323		7 232		4 533		6 652		0		0		23 600	
E1 Total STEP offences		72 772		70 090		94 678		132 943		107 844			97		78	478 502
E2 Total other offences		22 654		7 411		17 815		13 027		13 284		135		7	74 333	
E3 Grand total	95 426		77 501		112 493		145 970		121 128		232		85		552 835	
F1 Total Pol. 525	242 946		126 029		335 087		146 750		169 600		0		0		1020 412	
			#REF!		2 262											
G1 Verbal warnings - Drivers	2 607		49 024		51 153		31 824		1 771						136 379	
G2 Verbal warnings - Cyclists	36		515		1 680		6 023		5 495						13 749	
G3 Verbal warnings - Pedestrians	1 539		3 125		4 090		10 253		4 437						23 444	
G4 Total Warnings	4 182		52 664		56 923		48 100		11 703		0		0		173 572	

* Driving Offence Points Incurred
 ** FPT (Moving Offences - Pol. 570) of CTPD included in respective Regions.
 S/Arr stands for Summons/Arrests
 FPT stands for Fixed Penalty Tickets (Moving Offences - Pol. 570)

Table 32 - Complaints against Taxi Related Offences in 2013

Complaints received for	Complaints reported to Police (including TCU referrals)						Complaints reported to TCU	Referral from TCU to Police
	HKI	KE	KW	NTS	NTN	Total		
Soliciting Passengers	348	2	6	7	6	369	16	2
Refusing hire	630	122	349	169	113	1 383	2 255	501
Refusing to drive to destination	106	43	71	30	39	289	464	75
Failing to drive to destination by direct route	182	178	380	142	106	988	1 539	263
Overcharging	175	76	230	196	105	782	1 535	245
Taximeter offences	29	36	43	15	1	124	363	65
Behaving other than in a civil and orderly manner	227	81	247	85	56	696	1 672	214
Others	119	189	127	829	28	1 292	1 228	297
Total	1 816	727	1 453	1 473	454	5 923	9 072	1 662

Table 33 - Prosecutions against Taxi Related Offences in 2013

Action	Offence	HKI	KE	KW	NTS	NTN	Total
Pol. 570 (FPT)	Taxi driver not moving forward at taxi stand	0	0	0	0	2	2
	Taxi driver of first or second taxi at taxi stand not sitting in or standing beside his taxi	10	4	4	1	2	21
	Taxi driver at stand accepting hire out of turn	5	0	2	0	18	25
	Not setting taximeter to recording position	1	0	0	0	40	41
	Seatbelt offences	349	80	295	285	70	1 079
	<i>Sub-total</i>		365	84	301	286	132
Summons or Arrest	Soliciting passenger	22	0	74	0	60	156
	Refusing hire	91	5	20	4	6	126
	Refusing to drive to destination	16	4	3	2	4	29
	Failing to drive to destination by the most direct and practicable route	4	7	19	7	6	43
	Overcharging	22	2	8	10	5	47
	Taximeter offences	13	0	23	4	1	41
	Stopping elsewhere than at taxi stand	2	0	1	0	4	7
	Behaving other than in a civil and orderly manner	15	3	13	8	15	54
	Seatbelt offences	489	6	41	0	0	536
	Taxi stand offences	115	16	407	355	23	916
	Taxi driver identity plate offences	15	0	352	45	3	415
	Other offences	27	5	56	31	13	132
	<i>Sub-total</i>		831	48	1 017	466	140
Grand Total		1 196	132	1 318	752	272	3 670

Table 34 - Prosecutions Arising from Traffic Accidents

Offence	2012	2013	±% change
Dangerous Driving Causing Death	40	39	-3%
Dangerous Driving	248	306	+23%
Careless Driving	12 662	12 899	+2%
Speeding	1	36	+3500%
Drink Driving	202	175	-13%
Defective Vehicles	636	722	+14%
Others	2 043	1 918	-6%
Total (Summons/Arrest)	15 832	16 095	+2%

Table 35 - Enforcement Statistics by Police Formations in 2013 - HKI

Offences	T HKI		EU HKI		Central		Wanchai		Western		Eastern		Total	
	S/Arr	FPT	S/Arr	FPT	S/Arr	FPT	S/Arr	FPT	S/Arr	FPT	S/Arr	FPT	FPT #	
* Drink Driving	96												96	
* Drug Driving	3												3	
*1 Dangerous driving (included causing death)	124				1								125	
*1.1 Dangerous driving causing grievous bodily harm	3												3	
*2 Careless driving	3 714				2		6		7		1		3 730	
*3 Speeding by 15+ km/h to 30 km/h	94	7 195											94	7 195
*3.1 Speeding by 30+ km/h to 45 km/h	10	435											10	435
*3.2 Speeding by more than 45 km/h	25	1											25	1
3.3 Speeding by 15 km/h or less	131	15 366											131	15 366
*4 Double white line offences	130	4 177		12		91	5	155	1	83		64	136	4 582
*5 Traffic signal offences	143	8 779		5		17		5		19		11	143	8 836
6 U turn causing obstruction		1						1		1				3
7 Overloading	12	131											12	131
8 Insecure load	6	40						1		2		3	6	46
9 Traffic sign offences	53	11 280	1	10	7	2 795	27	2 687		1 165	2	887	90	18 824
10 Expressway offside lane restriction	11	306			1								12	306
10.1 Overtaking on the nearside		13												13
10.2 Failing to drive on nearside lane														
11 Box junction offence	1	253				21		30		14		3	1	321
11.1 Yellow stripe crossing		239				23		65		3		4		334
12 Seat belt offences	869	1 622			1	60	43	93		184	2	89	915	2 048
13 Using handheld mobile phone/telecommunications equipment while vehicle is in motion	9	4 036		3	2	198		144		267		47	11	4 695
*14 Driving in a motor race or speed trial														
*15 Failing to give precedence to pedestrian on zebra crossing	6	64										4	6	68
16 Construction and maintenance offences	1 892	35			5								1 897	35
17 Road work signage and lighting offences	79												79	
A1 STEP offences by Drivers	7 411	53 973	1	30	19	3 205	81	3 181	8	1 738	5	1 112	7 525	63 239
Sub-total	61 384		31		3 224		3 262		1 746		1 117		70 764	
A2 Other moving offences by Drivers	1 395	10 040	2	38	130	4 176	90	3 409	56	2 078	113	1 053	1 786	20 847
A3 Total traffic offences by Drivers	72 819		71		7 530		6 761		3 880		2 283		93 397	
18 Reckless cycling	1												1	
19 Careless cycling	19												19	
20 Cycling under the influence of drink or drug														
21 Negligent riding (including riding bicycle on footpath)							4				11		15	
22 Riding without lights during hours of darkness or in poor visibility conditions							2						2	
23 Cyclist disobeying traffic signal	44						6				1		51	
24 Cyclist disobeying traffic sign	34						19				7		60	
B1 STEP offences by Cyclists	98						31				19		148	
B2 Other moving offences by Cyclists	12						9						21	
B3 Total Traffic offences by Cyclists	110		0		0		40		0		19		169	
C1 STEP offences by Drivers and Cyclists	7 509	53 973	1	30	19	3 205	112	3 181	8	1 738	24	1 112	7 673	63 239
C2 Other moving offences by Drivers and Cyclists	1 407	10 040	2	38	130	4 176	99	3 409	56	2 078	113	1 053	1 807	20 847
C3 Total traffic offences by Drivers and Cyclists	8 916	64 013	3	68	149	7 381	211	6 590	64	3 816	137	2 165	9 480	84 086
Sub-total	72 929		71		7 530		6 801		3 880		2 302		93 566	
D1 STEP offences by Pedestrians	173				193		289		736		469		1 860	
D2 Other offences by Pedestrians														
D3 Total Pedestrian offences	173		0		193		289		736		469		1 860	
E1 Total STEP offences	61 655		31		3 417		3 582		2 482		1 605		72 772	
E2 Total other offences	11 447		40		4 306		3 508		2 134		1 166		22 654	
E3 Grand total	73 102		71		7 723		7 090		4 616		2 771		95 426	
F1 Total Pol. 525	5 620		138		61 442		60 371		52 768		62 607		242 946	
G1 Verbal warnings - Drivers	9		77		63		2 015		425		18		2 607	
G2 Verbal warnings - Cylists	5						12				19		36	
G3 Verbal warnings - Pedestrians	109				94		124		637		575		1 539	
G4 Total Warnings	123		77		157		2 151		1 062		612		4 182	

Including 53 FPT (Moving Offences - Pol. 570) from CTPD.
 * Driving Offence Points Incurred
 S/Arr stands for Summons/Arrests
 FPT stands for Fixed Penalty Tickets (Moving Offences - Pol. 570)

Table 36 - Enforcement Statistics by Police Formations in 2013 - KE

Offences	T KE		EU KE		Wong Tai Sin		Sau Mau Ping		Kwun Tong		Total	
	S/Arr	FPT	S/Arr	FPT	S/Arr	FPT	S/Arr	FPT	S/Arr	FPT	S/Arr	FPT #
* Drink Driving	224										224	
* Drug Driving	2										2	
*1 Dangerous driving (included causing death)	60										60	
*1.1 Dangerous driving causing grievous bodily harm	4										4	
*2 Careless driving	2 368		2		6		2		5		2 383	
*3 Speeding by 15+ km/h to 30 km/h	135	16 050									135	16 050
*3.1 Speeding by 30+ km/h to 45 km/h	17	794									17	794
*3.2 Speeding by more than 45 km/h	30										30	
3.3 Speeding by 15 km/h or less	104	24 412									104	24 412
*4 Double white line offences	23	3 602		6		151	2	42	1	29	26	3 830
*5 Traffic signal offences	117	6 866		4	1	22		8		12	118	6 912
6 U turn causing obstruction		1				1		1		1		4
7 Overloading	7	515									7	515
8 Insecure load	4	343			1	2		1		8	5	354
9 Traffic sign offences	10	1 970		6		585		924	1	487	11	3 972
10 Expressway offside lane restriction	2	458									2	458
10.1 Overtaking on the nearside		15										15
10.2 Failing to drive on nearside lane												
11 Box junction offence		20				4		3				27
11.1 Yellow stripe crossing		9						3		1		13
12 Seatbelt offences	107	1 060		1	55	30	7	37	80	7	249	1 135
13 Using handheld mobile phone/telecommunications equipment while vehicle is in motion	1	3 157		1		110		309		60	1	3 637
*14 Driving in a motor race or speed trial												
*15 Failing to give precedence to pedestrian on zebra crossing	1	273				4				6	1	283
16 Construction and maintenance offences	312	28									312	28
17 Road work signage and lighting offences	92										92	
A1 STEP offences by Drivers	3 620	59 573	2	18	63	909	11	1 328	87	611	3 783	62 439
Sub-total	63 193		20		972		1 339		698		66 222	
A2 Other moving offences by Drivers	841	2 966	5	19	114	1 168	87	872	109	1 087	1 156	6 139
A3 Total traffic offences by Drivers	67 000		44		2 254		2 298		1 894		73 517	
18 Reckless cycling												
19 Careless cycling	26										26	
20 Cycling under the influence of drink or drug												
21 Negligent riding (including riding bicycle on footpath)					57		63		278		398	
22 Riding without lights during hours of darkness or in poor visibility conditions	54										54	
23 Cyclist disobeying traffic signal	83				4		3		4		94	
24 Cyclist disobeying traffic sign	39				1		1				41	
B1 STEP offences by Cyclists	202				62		67		282		613	
B2 Other moving offences by Cyclists	48										48	
B3 Total Traffic offences by Cyclists	250				62		67		282		661	
C1 STEP offences by Drivers and Cyclists	3 822	59 573	2	18	125	909	78	1 328	369	611	4 396	62 439
C2 Other moving offences by Drivers and Cyclists	889	2 966	5	19	114	1 168	87	872	109	1 087	1 204	6 139
C3 Total traffic offences by Drivers and Cyclists	4 711	62 539	7	37	239	2 077	165	2 200	478	1 698	5 600	68 578
Sub-total	67 250		44		2 316		2 365		2 176		74 178	
D1 STEP offences by Pedestrians	972				633		714		936		3 255	
D2 Other offences by Pedestrians	34				18		2		14		68	
D3 Total Pedestrian offences	1 006		0		651		716		950		3 323	
E1 Total STEP offences	64 367		20		1 667		2 120		1 916		70 090	
E2 Total other offences	3 889		24		1 300		961		1 210		7 411	
E3 Grand total	68 256		44		2 967		3 081		3 126		77 501	
F1 Total Pol. 525	456		16		43 163		25 106		57 288		126 029	
G1 Verbal warnings - Drivers	201				32 835		5 734		10 254		49 024	
G2 Verbal warnings - Cyclists	439				1		33		42		515	
G3 Verbal warnings - Pedestrians	2 615		5		36		256		213		3 125	
G4 Total Warnings	3 255		5		32 872		6 023		10 509		52 664	

Including 27 FPT (Moving Offences - Pol. 570) from CTPD.
 * Driving Offence Points Incurred
 S/Arr stands for Summons/Arrests
 FPT stands for Fixed Penalty Tickets (Moving Offences - Pol. 570)

Table 37 - Enforcement Statistics by Police Formations in 2013 - KW

Offences	T KW		EU KW		Yau Tsim		Shamshuipo		Mongkok		Kowloon City		Total	
	S/Arr	FPT	S/Arr	FPT	S/Arr	FPT	S/Arr	FPT	S/Arr	FPT	S/Arr	FPT	S/Arr	FPT #
* Drink Driving	152												152	
* Drug Driving	10												10	
*1 Dangerous driving (included causing death)	44								1				45	
*1.1 Dangerous driving causing grievous bodily harm	5												5	
*2 Careless driving	4 064				8		6		7		23		4 108	
*3 Speeding by 15+ km/h to 30 km/h	63	8 685											63	8 685
*3.1 Speeding by 30+ km/h to 45 km/h	7	436											7	436
*3.2 Speeding by more than 45 km/h	29												29	
3.3 Speeding by 15 km/h or less	62	21 436											62	21 436
*4 Double white line offences	26	3 293		10	2	152	1	44	3	106		126	32	3 731
*5 Traffic signal offences	465	27 269		3		23	2	21	2	31	1	13	470	27 360
6 U turn causing obstruction		6		1		1				2		5		15
7 Overloading	11	406				1							11	407
8 Insecure load	3	12						1				2	3	15
9 Traffic sign offences	58	2 681		21	6	2 440	3	2 112	1	568	11	1 800	79	9 622
10 Expressway offside lane restriction		125												125
10.1 Overtaking on the nearside		3												3
10.2 Failing to drive on nearside lane														
11 Box junction offence		337		3	1	89		8		9	1	9	2	455
11.1 Yellow stripe crossing		714				88		9		9		11		831
12 Seatbelt offences	111	2 881		1	1	85	1	71	110	73	28	72	251	3 183
13 Using handheld mobile phone/telecommunications equipment while vehicle is in motion	6	3 680		6		235		134	1	94	1	134	8	4 283
*14 Driving in a motor race or speed trial														
*15 Failing to give precedence to pedestrian on zebra crossing	1	175										17	1	192
16 Construction and maintenance offences	420	8	2		3		82		61		47		615	8
17 Road work signage and lighting offences	28												28	
A1 STEP offences by Drivers	5 565	72 147	2	45	21	3 114	95	2 400	186	892	112	2 189	5 981	80 787
Sub-total	77 712		47		3 135		2 495		1 078		2 301		86 768	
A2 Other moving offences by Drivers	1 358	3 079	9	36	573	5 580	247	2 376	225	1 408	306	2 425	2 718	14 967
A3 Total traffic offences by Drivers	82 149		92		9 288		5 118		2 711		5 032		104 453	
18 Reckless cycling	1												1	
19 Careless cycling	7						8		1		1		17	
20 Cycling under the influence of drink or drug														
21 Negligent riding (including riding bicycle on footpath)					7		156		3		17		183	
22 Riding without lights during hours of darkness or in poor visibility conditions	21						107		4		7		139	
23 Cyclist disobeying traffic signal	130				19		20		9		2		180	
24 Cyclist disobeying traffic sign	65				56		22		11		5		159	
B1 STEP offences by Cyclists	224				82		313		28		32		679	
B2 Other moving offences by Cyclists	66				22		17		22		2		129	
B3 Total Traffic offences by Cyclists	290		0		104		330		50		34		808	
C1 STEP offences by Drivers and Cyclists	5 789	72 147	2	45	103	3 114	408	2 400	214	892	144	2 189	6 660	80 787
C2 Other moving offences by Drivers and Cyclists	1 424	3 079	9	36	595	5 580	264	2 376	247	1 408	308	2 425	2 847	14 967
C3 Total traffic offences by Drivers and Cyclists	7 213	75 226	11	81	698	8 694	672	4 776	461	2 300	452	4 614	9 507	95 754
D1 STEP offences by Pedestrians	1 199												7 231	
D2 Other offences by Pedestrians			2		882		2 662		1 205		1 281		1	
D3 Total Pedestrian offences	1 199		2		883		2 662		1 205		1 281		7 232	
E1 Total STEP offences	79 135		49		4 099		5 470		2 311		3 614		94 678	
E2 Total other offences	4 503		45		6 176		2 640		1 655		2 733		17 815	
E3 Grand total	83 638		94		10 275		8 110		3 966		6 347		112 493	
F1 Total Pol. 525	377		57		98 894		79 637		74 846		81 276		335 087	
G1 Verbal warnings - Drivers	18				6 480		4 869		27 785		12 001		51 153	
G2 Verbal warnings - Cyclists	1 172				355		46		100		7		1 680	
G3 Verbal warnings - Pedestrians	2 324				439		215		284		828		4 090	
G4 Total Warnings	3 514		0		7 274		5 130		28 169		12 836		56 923	

Including 63 FPT (Moving Offences - Pol. 570) from CTPD.
 * Driving Offence Points Incurred
 S/Arr stands for Summons/Arrests
 FPT stands for Fixed Penalty Tickets (Moving Offences - Pol. 570)

Table 38 - Enforcement Statistics by Police Formations in 2013 - NTS

Offences	T NTS		EU NTS		Tsuen Wan		Shatin		Kwai Tsing		Lantau		Airport		Total	
	S/Arr	FPT	S/Arr	FPT	S/Arr	FPT	S/Arr	FPT	S/Arr	FPT	S/Arr	FPT	S/Arr	FPT	S/Arr	FPT #
* Drink Driving	248														248	
* Drug Driving	5														5	
*1 Dangerous driving (included causing death)	91										2				93	
*1.1 Dangerous driving causing grievous bodily harm	7														7	
*2 Careless driving	3 432				3		6		8		33		4		3 486	
*3 Speeding by 15+ km/h to 30 km/h	864	49 816									2	140			866	49 956
*3.1 Speeding by 30+ km/h to 45 km/h	63	2 931									8			63	2 939	
*3.2 Speeding by more than 45 km/h	173	1												173	1	
3.3 Speeding by 15 km/h or less	196	32 021									1	118		197	32 139	
*4 Double white line offences	51	2 479		1		54		46	1	145		7	5	1	57	2 733
*5 Traffic signal offences	106	7 744		2		18		27		13		2	1	1	107	7 807
6 U turn causing obstruction						1				2						3
7 Overloading	143	1 624													143	1 624
8 Insecure load	3	401						2		47				3	3	453
9 Traffic sign offences	37	2 921		1		462	1	687	6	1 307		111	922	966	5 489	
10 Expressway offside lane restriction	79	3 186				1		1		2		1		79	3 191	
10.1 Overtaking on the nearside		347													347	
10.2 Failing to drive on nearside lane																
11 Box junction offence	1	41				2		5	1	12		1		2	61	
11.1 Yellow stripe crossing		13				4				1					18	
12 Seatbelt offences	91	2 415		1	59	19	44	17	49	147		7	5	16	248	2 622
13 Using handheld mobile phone/telecommunications equipment while vehicle is in motion	6	8 084		1		21		41		195	1	11	5	23	12	8 376
*14 Driving in a motor race or speed trial																
*15 Failing to give precedence to pedestrian on zebra crossing		26				1		2		1						30
16 Construction and maintenance offences	1 004	52				5		7		20			2		1 038	52
17 Road work signage and lighting offences	115														115	
A1 STEP offences by Drivers	6 715	114 102		6	67	583	58	828	85	1 872	39	406	944	44	7 908	117 841
Sub-total	120 817		6		650		886		1 957		445		988		125 749	
A2 Other moving offences by Drivers	1 469	6 570		38	187	889	74	1 096	320	1 357	18	682	89	36	2 157	10 717
A3 Total traffic offences by Drivers	128 856		44		1 726		2 056		3 634		1 145		1 113		138 623	
18 Reckless cycling	3														3	
19 Careless cycling	23							2		7		3			35	
20 Cycling under the influence of drink or drug																
21 Negligent riding (including riding bicycle on footpath)					145		1 365		70		197		3		1 780	
22 Riding without lights during hours of darkness or in poor visibility conditions	50						3		8						61	
23 Cyclist disobeying traffic signal	25				3		2				2				32	
24 Cyclist disobeying traffic sign	659				2		74				15				750	
B1 STEP offences by Cyclists	760				150		1 446		85		217		3		2 661	
B2 Other moving offences by Cyclists	108				1		40		1		3				153	
B3 Total Traffic offences by Cyclists	868		0		151		1 486		86		220		3		2 814	
C1 STEP offences by Drivers and Cyclists	7 475	114 102		6	217	583	1 504	828	170	1 872	256	406	947	44	10 569	117 841
C2 Other moving offences by Drivers and Cyclists	1 577	6 570		38	188	889	114	1 096	321	1 357	21	682	89	36	2 310	10 717
C3 Total traffic offences by Drivers and Cyclists	9 052	120 672		44	405	1 472	1 618	1 924	491	3 229	277	1 088	1 036	80	12 879	128 558
	129 724		44		1 877		3 542		3 720		1 365		1 116		141 437	
D1 STEP offences by Pedestrians	1 168				885		933		1 298		137		112		4 533	
D2 Other offences by Pedestrians																
D3 Total Pedestrian offences	1 168		0		885		933		1 298		137		112		4 533	
E1 Total STEP offences	122 745			6	1 685		3 265		3 340		799		1 103		132 943	
E2 Total other offences	8 147			38	1 077		1 210		1 678		703		125		13 027	
E3 Grand total	130 892		44		2 762		4 475		5 018		1 502		1 228		145 970	
F1 Total Pol. 525	397		2		39 629		57 418		44 149		4 886		269		146 750	
G1 Verbal warnings - Drivers	372				1 729		11 050		18 573		72		28		31 824	
G2 Verbal warnings - Cyclists	143				1 790		3 915		85		85		5		6 023	
G3 Verbal warnings - Pedestrians	168				5 873		3 840		307		34		31		10 253	
G4 Total Warnings	683		0		9 392		18 805		18 965		191		64		48 100	

Including 49 FPT (Moving Offences - Pol. 570) from CTPD.
 * Driving Offence Points Incurred
 S/Arr stands for Summons/Arrests
 FPT stands for Fixed Penalty Tickets (Moving Offences - Pol. 570)

Table 39 - Enforcement Statistics by Police Formations in 2013 - NTN

Offences	T NTN		EU NTN		Border		Yuen Long		Tuen Mun		Tai Po		Total	
	S/Arr	FPT	S/Arr	FPT	S/Arr	FPT	S/Arr	FPT	S/Arr	FPT	S/Arr	FPT	S/Arr	FPT #
* Drink Driving	233												233	
* Drug Driving	17												17	
*1 Dangerous driving (included causing death)	83						1						84	
*1.1 Dangerous driving causing grievous bodily harm														
*2 Careless driving	3 045						4		4		6		3 059	
*3 Speeding by 15+ km/h to 30 km/h	897	33 809											897	33 809
*3.1 Speeding by 30+ km/h to 45 km/h	74	2 135											74	2 135
*3.2 Speeding by more than 45 km/h	305												305	
3.3 Speeding by 15 km/h or less	238	20 631											238	20 631
*4 Double white line offences	26	2 606		6	2	127	1	351		39	3	109	32	3 238
*5 Traffic signal offences	275	9 742		17		4		72		15		44	275	9 894
6 U turn causing obstruction		5						1						6
7 Overloading	397	1 241				1							397	1 242
8 Insecure load	14	214				2		2		3		2	14	223
9 Traffic sign offences	9	1 062		9	1	244	3	817	6	736		648	19	3 516
10 Expressway offside lane restriction	93	1 597				2		1				15	93	1 615
10.1 Overtaking on the nearside	1	354											1	354
10.2 Failing to drive on nearside lane														
11 Box junction offence	1	15		1		1		8		11		8	2	44
11.1 Yellow stripe crossing		2								1		1		4
12 Seatbelt offences	336	1 619		2	1	138	5	112		101	22	49	364	2 021
13 Using handheld mobile phone/telecommunications equipment while vehicle is in motion	6	5 667		5		229		140		77	1	105	7	6 223
*14 Driving in a motor race or speed trial	6												6	
*15 Failing to give precedence to pedestrian on zebra crossing	2	102					1	33				2	3	137
16 Construction and maintenance offences	1 375	78			11	1		9		9		16	1 420	80
17 Road work signage and lighting offences	58												58	
A1 STEP offences by Drivers	7 491	80 879		40	15	749	25	1 537	19	983	48	984	7 598	85 172
Sub-total	88 370		40		764		1 562		1 002		1 032		92 770	
A2 Other moving offences by Drivers	1 782	4 154		64	54	769	279	2 914	40	994	197	1 415	2 352	10 375
A3 Total traffic offences by Drivers	94 306		104		1 587		4 755		2 036		2 644		105 497	
18 Reckless cycling	1						1						2	
19 Careless cycling	117						7				3		127	
20 Cycling under the influence of drink or drug														
21 Negligent riding (including riding bicycle on footpath)	7							2 662		809		2 244	5 722	
22 Riding without lights during hours of darkness or in poor visibility	378				16		510		7		37		948	
23 Cyclist disobeying traffic signal	157				1		8		2		3		171	
24 Cyclist disobeying traffic sign	850				46		160		184		218		1 458	
B1 STEP offences by Cyclists	1 510				63		3 348		1 002		2 505		8 428	
B2 Other moving offences by Cyclists	314				2		67		47		121		551	
B3 Total Traffic offences by Cyclists	1 824		0		65		3 415		1 049		2 626		8 979	
C1 STEP offences by Drivers and Cyclists	9 001	80 879		40	78	749	3 373	1 537	1 021	983	2 553	984	16 026	85 172
C2 Other moving offences by Drivers and Cyclists	2 096	4 154		64	56	769	346	2 914	87	994	318	1 415	2 903	10 375
C3 Total traffic offences by Drivers and Cyclists	11 097	85 033	0	104	134	1 518	3 719	4 451	1 108	1 977	2 871	2 399	18 929	95 547
Sub-total	96 130		104		1 652		8 170		3 085		5 270		114 476	
D1 STEP offences by Pedestrians	1 659				49		2 084		1 439		1 415		6 646	
D2 Other offences by Pedestrians											6		6	
D3 Total Pedestrian offences	1 659		0		49		2 084		1 439		1 421		6 652	
E1 Total STEP offences	91 539		40		876		6 994		3 443		4 952		107 844	
E2 Total other offences	6 250		64		825		3 260		1 081		1 739		13 284	
E3 Grand total	97 789		104		1 701		10 254		4 524		6 691		121 128	
F1 Total Pol. 525	336		21		2 172		60 902		39 412		66 757		169 600	
G1 Verbal warnings - Drivers	100				54		155		212		1 250		1 771	
G2 Verbal warnings - Cyclists	1 366				89		1 617		417		2 006		5 495	
G3 Verbal warnings - Pedestrians	1 247				15		1 626		328		1 221		4 437	
G4 Total Warnings	2 713		0		158		3 398		957		4 477		11 703	

Including 65 FPT (Moving Offences - Pol. 570) from CTPD.
 * Driving Offence Points Incurred
 S/Arr stands for Summons/Arrests
 FPT stands for Fixed Penalty Tickets (Moving Offences - Pol. 570)